

## CONSOLIDATED TEST RESULTS SUMMARY

Please see the following pages for full test results.

|  |                                       |   |
|--|---------------------------------------|---|
| <b>BULK SKU</b>                          | <b>BATCH #</b>                        | <b>NR:</b> Not Reported<br><b>NA:</b> Not Available<br><br><b>LOQ:</b> Limit Of Quantitation<br><b>LOD:</b> Limit Of Detection<br><br>1 g = 10 <sup>-3</sup> kg = 10 <sup>3</sup> mg = 10 <sup>6</sup> µg<br>1 mg/kg = 1 ppm = 1000 ppb |
| <b>PRODUCT NAME</b>                      | <b>SERVING SIZE</b>                   |   |
| <b>LABORATORY:</b> COLUMBIA LABORATORIES | <b>OREGON ACCREDITATION:</b> OR100028 |   |

| POTENCY                            | PER SERVING | PER GRAM | REGULATORY ACTION LEVEL |
|------------------------------------|-------------|----------|-------------------------|
| Cannabidiol (CBD)                  | mg/serving  | mg/g     | N/A                     |
| Total THC (d9-THC, THCA)           | mg/serving  | mg/g     | 3 mg/g                  |
| Cannabigerol (CBG)                 | mg/serving  | mg/g     | N/A                     |
| Cannabinol (CBN)                   | mg/serving  | mg/g     | N/A                     |
| Cannabichromene (CBC)              | mg/serving  | mg/g     | N/A                     |
| Tetrahydrocannabinolic Acid (THCA) | mg/serving  | mg/g     | N/A                     |
| Delta-9-THC (d9-THC)               | mg/serving  | mg/g     | N/A                     |
| Delta-8-THC (d8-THC)               | mg/serving  | mg/g     | N/A                     |

| HEAVY METALS | PER SERVING | PER GRAM | REGULATORY ACTION LEVEL   |
|--------------|-------------|----------|---------------------------|
| Arsenic      | µg/serving  | µg/g     | 10 µg/day <sup>[1]</sup>  |
| Cadmium      | µg/serving  | µg/g     | 4.1 µg/day <sup>[1]</sup> |
| Lead         | µg/serving  | µg/g     | 3.5 µg/day <sup>[2]</sup> |
| Mercury      | µg/serving  | µg/g     | 2 µg/day <sup>[1]</sup>   |

| PESTICIDES   | REGULATORY ACTION LEVEL |
|--|-------------------------|
| None of the 59 pesticides tested found above limit of detection in the sample. | 10 ppb <sup>[1]</sup>   |

| RESIDUAL SOLVENTS  |
|--|
| None of the 36 residual solvents tested found above limit of quantitation in the sample. |

| MICROBIAL    | PASS/FAIL |
|--------------|-----------|
| Yeast & Mold | Pass      |
| Coliform     | Pass      |

| TERPENES        | % OF SAMPLE |
|-----------------|-------------|
| Farnesene       | %           |
| β-Caryophyllene | %           |
| α-Bisabolol     | %           |

| TERPENES            | % OF SAMPLE |
|---------------------|-------------|
| Guaiol              | %           |
| Humulene            | %           |
| Caryophyllene Oxide | %           |

1. AMERICAN HERBAL PHARMACOPOEIA. (2014). CANNABIS INFLORESCENCE: STANDARDS OF IDENTITY, ANALYSIS, AND QUALITY CONTROL. WASHINGTON DC: AHP.

2. US FOOD AND DRUG ADMINISTRATION. (2019). LEAD IN FOOD, FOODWARES, AND DIETARY SUPPLEMENTS. WASHINGTON DC: FDA. US FOOD AND DRUG ADMINISTRATION. (2019). LEAD IN FOOD, FOODWARES, AND DIETARY SUPPLEMENTS. WASHINGTON DC: FDA.



12423 NE Whitaker Way  
 Portland, OR 97230  
 503-254-1794



**Report Number:** 21-003306/D02.R00  
**Report Date:** 04/02/2021  
**ORELAP#:** OR100028  
**Purchase Order:**  
**Received:** 03/26/21 16:40

**Customer:** Etz Hayim Holdings  
**Product identity:** FORM-DC50-SG100  
**Client/Metric ID:** .  
**Laboratory ID:** 21-003306-0001

**Sample Date:** 03/26/21 16:00

### Summary

#### Potency:

| Analyte per 1ml           | Result | Limits | Units  | Status |                                      |
|---------------------------|--------|--------|--------|--------|--------------------------------------|
| CBC per 1ml <sup>†</sup>  | 3.88   |        | mg/1ml |        | CBD-Total per 1ml 211 mg/1ml         |
| CBD per 1ml               | 211    |        | mg/1ml |        |                                      |
| CBDV per 1ml <sup>†</sup> | 0.908  |        | mg/1ml |        | THC-Total per 1ml 2.45 mg/1ml        |
| CBG per 1ml <sup>†</sup>  | 0.872  |        | mg/1ml |        |                                      |
| CBL per 1ml <sup>†</sup>  | 0.255  |        | mg/1ml |        | (Reported in milligrams per serving) |
| Δ9-THC per 1ml            | 2.45   |        | mg/1ml |        |                                      |

#### Residual Solvents:

*All analytes passing and less than LOQ.*

#### Pesticides:

*All analytes passing and less than LOQ.*

#### Terpenes:

| Analyte                           | Percent by weight | Percent of Total | Analyte                              | Percent by weight | Percent of Total |
|-----------------------------------|-------------------|------------------|--------------------------------------|-------------------|------------------|
| (R)-(+)-Limonene <sup>†</sup>     | 9.49              | 58.22%           | β-Myrcene <sup>†</sup>               | 4.58              | 28.10%           |
| β-Caryophyllene <sup>†</sup>      | 1.80              | 11.04%           | Humulene <sup>†</sup>                | 0.176             | 1.08%            |
| α-Bisabolol <sup>†</sup>          | 0.146             | 0.90%            | (-)-caryophyllene oxide <sup>†</sup> | 0.0637            | 0.39%            |
| d-3-Carene <sup>†</sup>           | 0.0358            | 0.22%            | (-)-Guaiol <sup>†</sup>              | 0.0307            | 0.19%            |
| <b>Total Terpenes<sup>†</sup></b> | <b>16.3</b>       | <b>100.00%</b>   |                                      |                   |                  |

#### Metals:

*Less than LOQ for all analytes.*



12423 NE Whitaker Way  
 Portland, OR 97230  
 503-254-1794

**Report Number:** 21-003306/D02.R00  
**Report Date:** 04/02/2021  
**ORELAP#:** OR100028  
**Purchase Order:**  
**Received:** 03/26/21 16:40



**Customer:** Etz Hayim Holdings  
 16427 NE Airport Way  
 PORTLAND 97230  
 United States of America (USA)

**Product identity:** FORM-DC50-SG100

**Client/Metric ID:** .

**Sample Date:** 03/26/21 16:00

**Laboratory ID:** 21-003306-0001

**Temp:** 20.2 °C

**Serving Size #1:** 0.943 g

**Density:** 0.9430 g/ml

### Sample Results

Potency per 1ml **Method J AOAC 2015 V98-6 (mod)Units mg/se Batch: 2102865 Analyze: 3/31/21 3:01:00 PM**

| Analyte                         | Result | Limits | Units  | LOQ    | Notes |
|---------------------------------|--------|--------|--------|--------|-------|
| CBC per 1ml <sup>†</sup>        | 3.88   |        | mg/1ml | 0.0299 |       |
| CBC-A per 1ml <sup>†</sup>      | < LOQ  |        | mg/1ml | 0.0299 |       |
| CBC-Total per 1ml <sup>†</sup>  | 3.88   |        | mg/1ml | 0.0561 |       |
| CBD per 1ml                     | 211    |        | mg/1ml | 2.99   |       |
| CBD-A per 1ml                   | < LOQ  |        | mg/1ml | 0.0299 |       |
| CBD-Total per 1ml               | 211    |        | mg/1ml | 3.02   |       |
| CBDV per 1ml <sup>†</sup>       | 0.908  |        | mg/1ml | 0.0299 |       |
| CBDV-A per 1ml <sup>†</sup>     | < LOQ  |        | mg/1ml | 0.0299 |       |
| CBDV-Total per 1ml <sup>†</sup> | 0.908  |        | mg/1ml | 0.0558 |       |
| CBG per 1ml <sup>†</sup>        | 0.872  |        | mg/1ml | 0.0299 |       |
| CBG-A per 1ml <sup>†</sup>      | < LOQ  |        | mg/1ml | 0.0299 |       |
| CBG-Total per 1ml <sup>†</sup>  | 0.872  |        | mg/1ml | 0.0558 |       |
| CBL per 1ml <sup>†</sup>        | 0.255  |        | mg/1ml | 0.0299 |       |
| CBN per 1ml                     | < LOQ  |        | mg/1ml | 0.0299 |       |
| Δ8-THC per 1ml <sup>†</sup>     | < LOQ  |        | mg/1ml | 0.0299 |       |
| Δ9-THC per 1ml                  | 2.45   |        | mg/1ml | 0.0299 |       |
| THC-A per 1ml                   | < LOQ  |        | mg/1ml | 0.0299 |       |
| THC-Total per 1ml               | 2.45   |        | mg/1ml | 0.0561 |       |
| THCV per 1ml <sup>†</sup>       | < LOQ  |        | mg/1ml | 0.0299 |       |
| THCV-A per 1ml <sup>†</sup>     | < LOQ  |        | mg/1ml | 0.0299 |       |
| THCV-Total per 1ml <sup>†</sup> | < LOQ  |        | mg/1ml | 0.0561 |       |



12423 NE Whitaker Way  
 Portland, OR 97230  
 503-254-1794

**Report Number:** 21-003306/D02.R00  
**Report Date:** 04/02/2021  
**ORELAP#:** OR100028  
**Purchase Order:**  
**Received:** 03/26/21 16:40



| Solvents                |        |        |      |        |       | Residual Solvents by GC/MS |        |        |      |        | Units µg/g | Batch 2102784 | Analyze 03/30/21 09:12 AM |  |  |  |  |
|-------------------------|--------|--------|------|--------|-------|----------------------------|--------|--------|------|--------|------------|---------------|---------------------------|--|--|--|--|
| Analyte                 | Result | Limits | LOQ  | Status | Notes | Analyte                    | Result | Limits | LOQ  | Status | Notes      |               |                           |  |  |  |  |
| 1,4-Dioxane             | < LOQ  | 380    | 100  | pass   |       | 2-Butanol                  | < LOQ  | 5000   | 200  | pass   |            |               |                           |  |  |  |  |
| 2-Ethoxyethanol         | < LOQ  | 160    | 30.0 | pass   |       | 2-Methylbutane             | < LOQ  |        | 200  |        |            |               |                           |  |  |  |  |
| 2-Methylpentane         | < LOQ  |        | 30.0 |        |       | 2-Propanol (IPA)           | < LOQ  | 5000   | 200  | pass   |            |               |                           |  |  |  |  |
| 2,2-Dimethylbutane      | < LOQ  |        | 30.0 |        |       | 2,2-Dimethylpropane        | < LOQ  |        | 200  |        |            |               |                           |  |  |  |  |
| 2,3-Dimethylbutane      | < LOQ  |        | 30.0 |        |       | 3-Methylpentane            | < LOQ  |        | 30.0 |        |            |               |                           |  |  |  |  |
| Acetone                 | < LOQ  | 5000   | 200  | pass   |       | Acetonitrile               | < LOQ  | 410    | 100  | pass   |            |               |                           |  |  |  |  |
| Benzene                 | < LOQ  | 2.00   | 1.00 | pass   |       | Butanes (sum)              | < LOQ  | 5000   | 400  | pass   |            |               |                           |  |  |  |  |
| Cyclohexane             | < LOQ  | 3880   | 200  | pass   |       | Ethanol <sup>1</sup>       | < LOQ  |        | 200  |        |            |               |                           |  |  |  |  |
| Ethyl acetate           | < LOQ  | 5000   | 200  | pass   |       | Ethyl benzene              | < LOQ  |        | 200  |        |            |               |                           |  |  |  |  |
| Ethyl ether             | < LOQ  | 5000   | 200  | pass   |       | Ethylene glycol            | < LOQ  | 620    | 200  | pass   |            |               |                           |  |  |  |  |
| Ethylene oxide          | < LOQ  | 50.0   | 20.0 | pass   |       | Hexanes (sum)              | < LOQ  | 290    | 150  | pass   |            |               |                           |  |  |  |  |
| Isopropyl acetate       | < LOQ  | 5000   | 200  | pass   |       | Isopropylbenzene           | < LOQ  | 70.0   | 30.0 | pass   |            |               |                           |  |  |  |  |
| m,p-Xylene              | < LOQ  |        | 200  |        |       | Methanol                   | < LOQ  | 3000   | 200  | pass   |            |               |                           |  |  |  |  |
| Methylene chloride      | < LOQ  | 600    | 60.0 | pass   |       | Methylpropane              | < LOQ  |        | 200  |        |            |               |                           |  |  |  |  |
| n-Butane                | < LOQ  |        | 200  |        |       | n-Heptane                  | < LOQ  | 5000   | 200  | pass   |            |               |                           |  |  |  |  |
| n-Hexane                | < LOQ  |        | 30.0 |        |       | n-Pentane                  | < LOQ  |        | 200  |        |            |               |                           |  |  |  |  |
| o-Xylene                | < LOQ  |        | 200  |        |       | Pentanes (sum)             | < LOQ  | 5000   | 600  | pass   |            |               |                           |  |  |  |  |
| Propane                 | < LOQ  | 5000   | 200  | pass   |       | Tetrahydrofuran            | < LOQ  | 720    | 100  | pass   |            |               |                           |  |  |  |  |
| Toluene                 | < LOQ  | 890    | 100  | pass   |       | Total Xylenes              | < LOQ  |        | 400  |        |            |               |                           |  |  |  |  |
| Total Xylenes and Ethyl | < LOQ  | 2170   | 600  | pass   |       |                            |        |        |      |        |            |               |                           |  |  |  |  |



12423 NE Whitaker Way  
 Portland, OR 97230  
 503-254-1794



**Report Number:** 21-003306/D02.R00  
**Report Date:** 04/02/2021  
**ORELAP#:** OR100028  
**Purchase Order:**  
**Received:** 03/26/21 16:40

| Pesticides   |        |        |       |        |       |                     |        |        |       |        |       |
|--|--------|--------|-------|--------|-------|---------------------|--------|--------|-------|--------|-------|
| Method AOAC 2007.01 & EN 15662 (mod) Units mg/kg Batch 2102830 Analyze 03/30/21 04:53 PM |        |        |       |        |       |                     |        |        |       |        |       |
| Analyte  | Result | Limits | LOQ   | Status | Notes | Analyte             | Result | Limits | LOQ   | Status | Notes |
| Abamectin  | < LOQ  | 0.50   | 0.250 | pass   |       | Acephate            | < LOQ  | 0.40   | 0.250 | pass   |       |
| Acequinocyl  | < LOQ  | 2.0    | 1.00  | pass   |       | Acetamiprid         | < LOQ  | 0.20   | 0.100 | pass   |       |
| Aldicarb   | < LOQ  | 0.40   | 0.200 | pass   |       | Azoxystrobin        | < LOQ  | 0.20   | 0.100 | pass   |       |
| Bifenazate   | < LOQ  | 0.20   | 0.100 | pass   |       | Bifenthrin          | < LOQ  | 0.20   | 0.100 | pass   |       |
| Boscalid   | < LOQ  | 0.40   | 0.200 | pass   |       | Carbaryl            | < LOQ  | 0.20   | 0.100 | pass   |       |
| Carbofuran   | < LOQ  | 0.20   | 0.100 | pass   |       | Chlorantraniliprole | < LOQ  | 0.20   | 0.100 | pass   |       |
| Chlorfenapyr   | < LOQ  | 1.0    | 0.500 | pass   |       | Chlorpyrifos        | < LOQ  | 0.20   | 0.100 | pass   |       |
| Clofentezine   | < LOQ  | 0.20   | 0.100 | pass   |       | Cyfluthrin          | < LOQ  | 1.0    | 0.500 | pass   |       |
| Cypermethrin   | < LOQ  | 1.0    | 0.500 | pass   |       | Daminozide          | < LOQ  | 1.0    | 0.500 | pass   |       |
| Diazinon   | < LOQ  | 0.20   | 0.100 | pass   |       | Dichlorvos          | < LOQ  | 1.0    | 0.500 | pass   |       |
| Dimethoate   | < LOQ  | 0.20   | 0.100 | pass   |       | Ethoprophos         | < LOQ  | 0.20   | 0.100 | pass   |       |
| Etofenprox   | < LOQ  | 0.40   | 0.200 | pass   |       | Etoxazole           | < LOQ  | 0.20   | 0.100 | pass   |       |
| Fenoxycarb   | < LOQ  | 0.20   | 0.100 | pass   |       | Fenpyroximate       | < LOQ  | 0.40   | 0.200 | pass   |       |
| Fipronil   | < LOQ  | 0.40   | 0.200 | pass   |       | Fonicamid           | < LOQ  | 1.0    | 0.400 | pass   |       |
| Fludioxonil  | < LOQ  | 0.40   | 0.200 | pass   |       | Hexythiazox         | < LOQ  | 1.0    | 0.400 | pass   |       |
| Imazalil   | < LOQ  | 0.20   | 0.100 | pass   |       | Imidacloprid        | < LOQ  | 0.40   | 0.200 | pass   |       |
| Kresoxim-methyl  | < LOQ  | 0.40   | 0.200 | pass   |       | Malathion           | < LOQ  | 0.20   | 0.100 | pass   |       |
| Metalaxyl  | < LOQ  | 0.20   | 0.100 | pass   |       | Methiocarb          | < LOQ  | 0.20   | 0.100 | pass   |       |
| Methomyl   | < LOQ  | 0.40   | 0.200 | pass   |       | MGK-264             | < LOQ  | 0.20   | 0.100 | pass   |       |
| Myclobutanil   | < LOQ  | 0.20   | 0.100 | pass   |       | Naled               | < LOQ  | 0.50   | 0.250 | pass   |       |
| Oxamyl   | < LOQ  | 1.0    | 0.500 | pass   |       | Paclobutrazole      | < LOQ  | 0.40   | 0.200 | pass   |       |
| Parathion-Methyl   | < LOQ  | 0.20   | 0.200 | pass   |       | Permethrin          | < LOQ  | 0.20   | 0.100 | pass   |       |
| Phosmet  | < LOQ  | 0.20   | 0.100 | pass   |       | Piperonyl butoxide  | < LOQ  | 2.0    | 1.00  | pass   |       |
| Prallethrin  | < LOQ  | 0.20   | 0.200 | pass   |       | Propiconazole       | < LOQ  | 0.40   | 0.200 | pass   |       |
| Propoxur   | < LOQ  | 0.20   | 0.100 | pass   |       | Pyrethrin I (total) | < LOQ  | 1.0    | 0.500 | pass   |       |
| Pyridaben  | < LOQ  | 0.20   | 0.100 | pass   |       | Spinosad            | < LOQ  | 0.20   | 0.100 | pass   |       |
| Spiromesifen   | < LOQ  | 0.20   | 0.100 | pass   |       | Spirotetramat       | < LOQ  | 0.20   | 0.100 | pass   |       |
| Spiroxamine  | < LOQ  | 0.40   | 0.200 | pass   |       | Tebuconazole        | < LOQ  | 0.40   | 0.200 | pass   |       |
| Thiacloprid  | < LOQ  | 0.20   | 0.100 | pass   |       | Thiamethoxam        | < LOQ  | 0.20   | 0.100 | pass   |       |
| Trifloxystrobin  | < LOQ  | 0.20   | 0.100 | pass   |       |                     |        |        |       |        |       |

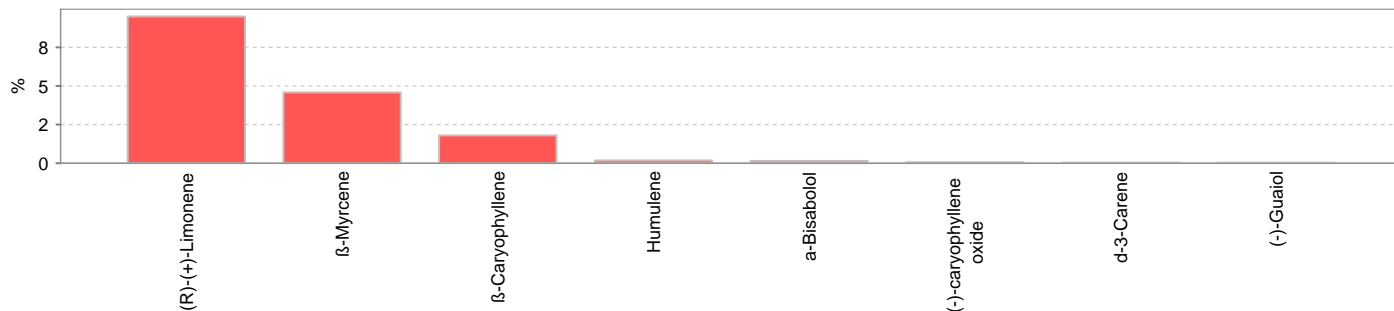


12423 NE Whitaker Way  
Portland, OR 97230  
503-254-1794

**Report Number:** 21-003306/D02.R00  
**Report Date:** 04/02/2021  
**ORELAP#:** OR100028  
**Purchase Order:**  
**Received:** 03/26/21 16:40



| Terpenes                         |             |       |            | Method J AOAC 2015 V98-6 | Units %                              | Batch 2102807 | Analyze 03/30/21 09:50 AM |            |       |
|----------------------------------|-------------|-------|------------|--------------------------|--------------------------------------|---------------|---------------------------|------------|-------|
| Analyte                          | Result      | LOQ   | % of Total | Notes                    | Analyte                              | Result        | LOQ                       | % of Total | Notes |
| (R)-(+)-Limonene <sup>†</sup>    | 9.49        | 0.187 | 58.22%     |                          | β-Myrcene <sup>†</sup>               | 4.58          | 0.018                     | 28.10%     |       |
| β-Caryophyllene <sup>†</sup>     | 1.80        | 0.018 | 11.04%     |                          | Humulene <sup>†</sup>                | 0.176         | 0.018                     | 1.08%      |       |
| α-Bisabolol <sup>†</sup>         | 0.146       | 0.018 | 0.90%      |                          | (-)-caryophyllene oxide <sup>†</sup> | 0.0637        | 0.018                     | 0.39%      |       |
| d-3-Carene <sup>†</sup>          | 0.0358      | 0.018 | 0.22%      |                          | (-)-Guaiol <sup>†</sup>              | 0.0307        | 0.018                     | 0.19%      |       |
| α-Terpinene <sup>†</sup>         | < LOQ       | 0.018 | 0.00%      |                          | Linalool <sup>†</sup>                | < LOQ         | 0.018                     | 0.00%      |       |
| trans-β-Ocimene <sup>†</sup>     | < LOQ       | 0.012 | 0.00%      |                          | cis-β-Ocimene <sup>†</sup>           | < LOQ         | 0.006                     | 0.00%      |       |
| (±)-trans-Nerolidol <sup>†</sup> | < LOQ       | 0.018 | 0.00%      |                          | valencene <sup>†</sup>               | < LOQ         | 0.018                     | 0.00%      |       |
| Sabinene <sup>†</sup>            | < LOQ       | 0.018 | 0.00%      |                          | (±)-Camphor <sup>†</sup>             | < LOQ         | 0.018                     | 0.00%      |       |
| (-)-α-Terpineol <sup>†</sup>     | < LOQ       | 0.018 | 0.00%      |                          | (-)-Isopulegol <sup>†</sup>          | < LOQ         | 0.018                     | 0.00%      |       |
| (-)-β-Pinene <sup>†</sup>        | < LOQ       | 0.018 | 0.00%      |                          | (+)-Borneol <sup>†</sup>             | < LOQ         | 0.018                     | 0.00%      |       |
| (+)-Cedrol <sup>†</sup>          | < LOQ       | 0.018 | 0.00%      |                          | (+)-fenchol <sup>†</sup>             | < LOQ         | 0.018                     | 0.00%      |       |
| (+)-Pulegone <sup>†</sup>        | < LOQ       | 0.018 | 0.00%      |                          | (±)-cis-Nerolidol <sup>†</sup>       | < LOQ         | 0.018                     | 0.00%      |       |
| (±)-fenchone <sup>†</sup>        | < LOQ       | 0.018 | 0.00%      |                          | α-cedrene <sup>†</sup>               | < LOQ         | 0.018                     | 0.00%      |       |
| α-phellandrene <sup>†</sup>      | < LOQ       | 0.018 | 0.00%      |                          | α-pinene <sup>†</sup>                | < LOQ         | 0.018                     | 0.00%      |       |
| Camphene <sup>†</sup>            | < LOQ       | 0.018 | 0.00%      |                          | Eucalyptol <sup>†</sup>              | < LOQ         | 0.018                     | 0.00%      |       |
| farnesene <sup>†</sup>           | < LOQ       | 0.018 | 0.00%      |                          | γ-Terpinene <sup>†</sup>             | < LOQ         | 0.018                     | 0.00%      |       |
| Geraniol <sup>†</sup>            | < LOQ       | 0.018 | 0.00%      |                          | Geranyl acetate <sup>†</sup>         | < LOQ         | 0.018                     | 0.00%      |       |
| Isoborneol <sup>†</sup>          | < LOQ       | 0.018 | 0.00%      |                          | Menthol <sup>†</sup>                 | < LOQ         | 0.018                     | 0.00%      |       |
| nerol <sup>†</sup>               | < LOQ       | 0.018 | 0.00%      |                          | p-Cymene <sup>†</sup>                | < LOQ         | 0.018                     | 0.00%      |       |
| Sabinene hydrate <sup>†</sup>    | < LOQ       | 0.018 | 0.00%      |                          | Terpinolene <sup>†</sup>             | < LOQ         | 0.018                     | 0.00%      |       |
| <b>Total Terpenes</b>            | <b>16.3</b> |       |            |                          |                                      |               |                           |            |       |



| Metals  |        |        |       |        |         |          |                     |       |  |
|---------|--------|--------|-------|--------|---------|----------|---------------------|-------|--|
| Analyte | Result | Limits | Units | LOQ    | Batch   | Analyze  | Method              | Notes |  |
| Arsenic | < LOQ  |        | mg/kg | 0.0450 | 2102912 | 04/01/21 | AOAC 2013.06 (mod.) | X     |  |
| Cadmium | < LOQ  |        | mg/kg | 0.0450 | 2102912 | 04/01/21 | AOAC 2013.06 (mod.) | X     |  |
| Lead    | < LOQ  |        | mg/kg | 0.0450 | 2102912 | 04/01/21 | AOAC 2013.06 (mod.) | X     |  |
| Mercury | < LOQ  |        | mg/kg | 0.0225 | 2102912 | 04/01/21 | AOAC 2013.06 (mod.) | X     |  |



12423 NE Whitaker Way  
Portland, OR 97230  
503-254-1794



**Report Number:** 21-003306/D03.R00  
**Report Date:** 04/02/2021  
**ORELAP#:** OR100028  
**Purchase Order:**  
**Received:** 03/26/21 16:40

**Customer:** Etz Hayim Holdings  
16427 NE Airport Way  
PORTLAND 97230  
United States of America (USA)

**Product identity:** FORM-DC50-SG100

**Client/Metric ID:** .

**Sample Date:** 03/26/21 16:00

**Laboratory ID:** 21-003306-0002

**Temp:** 20.2 °C

### Sample Results

| Microbiology            |        |        |       |     |         |          |                         |       |
|-------------------------|--------|--------|-------|-----|---------|----------|-------------------------|-------|
| Analyte                 | Result | Limits | Units | LOQ | Batch   | Analyze  | Method                  | Notes |
| E.coli                  | < LOQ  |        | cfu/g | 10  | 2102735 | 03/31/21 | AOAC 991.14 (Petrifilm) | X     |
| Total Coliforms         | < LOQ  |        | cfu/g | 10  | 2102735 | 03/31/21 | AOAC 991.14 (Petrifilm) | X     |
| Mold (RAPID Petrifilm)  | < LOQ  |        | cfu/g | 10  | 2102736 | 03/31/21 | AOAC 2014.05 (RAPID)    | X     |
| Yeast (RAPID Petrifilm) | < LOQ  |        | cfu/g | 10  | 2102736 | 03/31/21 | AOAC 2014.05 (RAPID)    | X     |