

CONSOLIDATED TEST RESULTS SUMMARY

Please see the following pages for full test results.

BULK SKU SG50	BATCH # DK22	LOQ: Limit Of Quantitation LOD: Limit Of Detection 1 g = 10 ⁻³ kg = 10 ³ mg = 10 ⁶ µg 1 mg/kg = 1 ppm = 1000 ppb
PRODUCT NAME 50mg Softgels	SERVING SIZE 1 capsule (0.400 g)	
LABORATORY: Columbia Laboratories	OREGON ACCREDITATION: OR100028	

POTENCY	PER SERVING	PER GRAM	Percent
Cannabidiol (CBD)	50.8 mg/serving	127 mg/g	12.7 %
Total THC (d9-THC, THCA)	0.780 mg/serving	1.95 mg/g	0.195 %
Cannabigerol (CBG)	0.464 mg/serving	1.16 mg/g	0.116 %
Cannabinol (CBN)	<LOQ mg/serving	<LOQ mg/g	<LOQ %
Cannabichromene (CBC)	0.708 mg/serving	1.77 mg/g	0.177 %
Tetrahydrocannabinolic Acid (THCA)	<LOQ mg/serving	<LOQ mg/g	<LOQ %
Delta-9-THC (d9-THC)	0.780 mg/serving	1.95 mg/g	0.195 %
Delta-8-THC (d8-THC)	<LOQ mg/serving	<LOQ mg/g	<LOQ %

HEAVY METALS	PER SERVING	PER GRAM	REGULATORY ACTION LEVEL
Arsenic	<LOQ µg/serving	<LOQ µg/g	10 µg/day ^[1]
Cadmium	<LOQ µg/serving	<LOQ µg/g	4.1 µg/day ^[1]
Lead	<LOQ µg/serving	<LOQ µg/g	3.5 µg/day ^[2]
Mercury	<LOQ µg/serving	<LOQ µg/g	2 µg/day ^[1]

PESTICIDES	REGULATORY ACTION LEVEL
None of the other 59 pesticides tested found above limit of detection in the sample.	10 ppb ^[1]

RESIDUAL SOLVENTS	Results	REGULATORY ACTION LEVEL
Ethanol	<LOQ	50,000 mg/day
Heptane	<LOQ	50,000 mg/day
None of the 34 residual solvents tested found above limit of quantitation in the sample.		

MICROBIAL	PASS/FAIL
Yeast & Mold	Pass
Coliform	Pass

TERPENES	% OF SAMPLE
β-Caryophyllene	12.5 %
α-Bisabolol	0.510 %
Humulene	0.890 %
Caryophyllene Oxide	0.220 %



1. American Herbal Pharmacopoeia. (2014). Cannabis Inflorescence: Standards of Identity, Analysis, and Quality Control. Washington DC: AHP.
 2. US Food and Drug Administration. (2019). Lead in Food, Foodwares, and Dietary Supplements. Washington DC: FDA. US Food and Drug Administration. (2019). Lead in Food, Foodwares, and Dietary Supplements. Washington DC: FDA.



12423 NE Whitaker Way
Portland, OR 97230
503-254-1794



Report Number: 21-013872/D007.R000
Report Date: 12/08/2021
ORELAP#: OR100028
Purchase Order:
Received: 11/24/21 14:41

Customer: Etz Hayim Holdings
Product identity: FORM-DK22-SG50
Client/Metric ID: .
Laboratory ID: 21-013872-0001

Summary

Potency:

Analyte per 1ml	Result	Limits	Units	Status	
CBC per 1ml [†]	1.77		mg/1ml		CBD Total per 1ml 127 mg/1ml
CBD per 1ml	127		mg/1ml		
CBDV per 1ml [†]	0.536		mg/1ml		THC-Total per 1ml 1.95 mg/1ml
CBE per 1ml [†]	0.849		mg/1ml		
CBG per 1ml [†]	1.16		mg/1ml		(Reported in milligrams per serving)
CBL per 1ml [†]	0.115		mg/1ml		
CBT per 1ml [†]	2.01		mg/1ml		
Δ9 THC per 1ml	1.95		mg/1ml		



12423 NE Whitaker Way
 Portland, OR 97230
 503-254-1794



Report Number: 21-013872/D007.R000
Report Date: 12/08/2021
ORELAP#: OR100028
Purchase Order:
Received: 11/24/21 14:41

Customer: Etz Hayim Holdings
 16427 NE Airport Way
 PORTLAND 97230
 United States of America (USA)

Product identity: FORM-DK22-SG50

Client/Metric ID: .

Sample Date:

Laboratory ID: 21-013872-0001

Serving Size #1: 0.924 g

Density: 0.9240 g/ml

Sample Results

Potency per 1ml					
Method J AOAC 2015 V98-6 (mod) Units mg/se Batch: 2110708 Analyze: 11/30/21 1:54:00 PM					
Analyte	Result	Limits	Units	LOQ	Notes
CBC per 1ml [†]	1.77		mg/1ml	0.0304	
CBC-A per 1ml [†]	< LOQ		mg/1ml	0.0329	
CBC-Total per 1ml [†]	1.77		mg/1ml	0.0571	
CBD per 1ml	127		mg/1ml	3.04	
CBD-A per 1ml	< LOQ		mg/1ml	0.0329	
CBD-Total per 1ml	127		mg/1ml	3.07	
CBDV per 1ml [†]	0.536		mg/1ml	0.0304	
CBDV-A per 1ml [†]	< LOQ		mg/1ml	0.0329	
CBDV-Total per 1ml [†]	0.536		mg/1ml	0.0567	
CBE per 1ml [†]	0.849		mg/1ml	0.0304	
CBG per 1ml [†]	1.16		mg/1ml	0.0304	
CBG-A per 1ml [†]	< LOQ		mg/1ml	0.0329	
CBG-Total per 1ml [†]	1.16		mg/1ml	0.0567	
CBL per 1ml [†]	0.115		mg/1ml	0.0304	
CBL-A per 1ml [†]	< LOQ		mg/1ml	0.0329	
CBL-Total per 1ml [†]	0.115		mg/1ml	0.0571	
CBN per 1ml	< LOQ		mg/1ml	0.0329	
CBT per 1ml [†]	2.01		mg/1ml	0.0304	
Δ8-THCV per 1ml [†]	< LOQ		mg/1ml	0.0329	
Δ8-THC per 1ml [†]	< LOQ		mg/1ml	0.0329	
Δ9-THC per 1ml	1.95		mg/1ml	0.0304	
exo-THC per 1ml [†]	< LOQ		mg/1ml	0.0329	
THC-A per 1ml	< LOQ		mg/1ml	0.0329	
THC-Total per 1ml	1.95		mg/1ml	0.0571	
THCV per 1ml [†]	< LOQ		mg/1ml	0.0329	
THCV-A per 1ml [†]	< LOQ		mg/1ml	0.0329	
THCV-Total per 1ml [†]	< LOQ		mg/1ml	0.0618	
Total Cannabinoids per 1ml	135		mg/1ml		



12423 NE Whitaker Way
Portland, OR 97230
503-254-1794



Report Number: 21-013872/D007.R000
Report Date: 12/08/2021
ORELAP#: OR100028
Purchase Order:
Received: 11/24/21 14:41

These test results are representative of the individual sample selected and submitted by the client.

Abbreviations

Limits: Action Levels per OAR-333-007-0400, OAR-333-007-0210, OAR-333-007-0220, CCR title 16-division 42. BCC-section 5723

Limit(s) of Quantitation (LOQ): The minimum levels, concentrations, or quantities of a target variable (e.g., target analyte) that can be reported with a specified degree of confidence.

† = Analyte not NELAP accredited.

Units of Measure

g = Gram

g/ml = Gram per milliliter

mg/1ml = Milligram per 1ml

% = Percentage of sample

% wt = $\mu\text{g/g}$ divided by 10,000

Approved Signatory

Derrick Tanner
General Manager



12423 NE Whitaker Way
Portland, OR 97230
503-254-1794



Report Number: 21-013872/D007.R000
Report Date: 12/08/2021
ORELAP#: OR100028
Purchase Order:
Received: 11/24/21 14:41



12423 NE Whitaker Way Portland OR 97230 p.503-254-1794

Cannabis Chain of Custody Record

ORELAP ID: OR100028

Field ID		Date/Time Collected	Pesticides - OR 59 compounds	Pesticide Multi-Residue - 379 compounds	Potency	Residual Solvents	Water Activity	Moisture	Terpenes	Micro: Yeast and Mold	Micro: E.Coli and Total Coliform	Heavy Metals	Mycotoxins	Other	Matrix	Weight	Serving size for edibles	Comments/Metric ID
FORM-DK21-SG25	11/18	1020			X													Laz Nat Discount
FORM-DK21-SG25	11/18	1020							X	X								
FORM-DK21-SG25	11/18	1020	X			X			X		X							potency first
FORM-DK22-SG50	11/18	1600			X													
FORM-DK22-SG50	11/18	1600							X	X								
FORM-DK22-SG50	11/18	1600	X			X		X				X						

Collected By:	Relinquished By:	Date	Time	Received by:	Date	Time	Lab Use Only:
<input checked="" type="checkbox"/> Standard (5 day)							Client Alias:
<input type="checkbox"/> Rush (3-4 day) (1.5x Standard)							Order Number:
<input checked="" type="checkbox"/> Priority Rush (2 day) (2x Standard)							Proper Container
							Sample Condition: 20.6°C
							Temperature: Client
							Shipped Via:
							Evidence of cooling: <input type="checkbox"/> Yes <input checked="" type="checkbox"/> No

SUBMISSION OF SAMPLES WITH TESTING REQUIREMENTS TO PIXIS WILL BE UNDERSTOOD TO BE AN AGREEMENT FOR SERVICES IN ACCORDANCE WITH THE CONDITIONS LISTED ON THE BACK OF THIS FORM

Revision: 1.02 Control#: CF023
Effective 01/31/2019 Revised 01/31/2019

www.pixislabs.com

Page 1 of 2



12423 NE Whitaker Way
Portland, OR 97230
503-254-1794



Report Number: 21-013872/D007.R000
Report Date: 12/08/2021
ORELAP#: OR100028
Purchase Order:
Received: 11/24/21 14:41

Revision: Document D:
Legacy D: Effective:

Laboratory Quality Control Results

JAOAC2015 V986							
Batch ID: 2110708							
Laboratory Control Sample							
Analyte	Result	Spike	Units	% Rec	Limits	Evaluation	Notes
CBDVA	0.00913	0.01	%	91.3	85.0 - 115	Acceptable	
CBDV	0.00993	0.01	%	99.3	85.0 - 115	Acceptable	
CBE	0.00923	0.01	%	92.3	85.0 - 115	Acceptable	
CBDA	0.00990	0.01	%	99.0	85.0 - 115	Acceptable	
CBGA	0.00919	0.01	%	91.9	85.0 - 115	Acceptable	
CBG	0.00943	0.01	%	94.3	85.0 - 115	Acceptable	
CBD	0.00995	0.01	%	99.5	85.0 - 115	Acceptable	
THCV	0.00947	0.01	%	94.7	85.0 - 115	Acceptable	
d8THCV	0.00881	0.01	%	88.1	85.0 - 115	Acceptable	
THCVA	0.00896	0.01	%	89.6	85.0 - 115	Acceptable	
CBN	0.00989	0.01	%	98.9	85.0 - 115	Acceptable	
exo-THC	0.00862	0.01	%	86.2	85.0 - 115	Acceptable	
d9THC	0.00976	0.01	%	97.6	85.0 - 115	Acceptable	
d8THC	0.00935	0.01	%	93.5	85.0 - 115	Acceptable	
CBL	0.00883	0.01	%	88.3	85.0 - 115	Acceptable	
CBC	0.00963	0.01	%	96.3	85.0 - 115	Acceptable	
THCA	0.00967	0.01	%	96.7	85.0 - 115	Acceptable	
CBCA	0.00928	0.01	%	92.8	85.0 - 115	Acceptable	
CBLA	0.00921	0.01	%	92.1	85.0 - 115	Acceptable	
CBT	0.0109	0.01	%	109	85.0 - 115	Acceptable	

Method Blank						
Analyte	Result	LOQ	Units	Limits	Evaluation	Notes
CBDVA	<LOQ	0.003	%	< 0.003	Acceptable	
CBDV	<LOQ	0.003	%	< 0.003	Acceptable	
CBE	<LOQ	0.003	%	< 0.003	Acceptable	
CBDA	<LOQ	0.003	%	< 0.003	Acceptable	
CBGA	<LOQ	0.003	%	< 0.003	Acceptable	
CBG	<LOQ	0.003	%	< 0.003	Acceptable	
CBD	<LOQ	0.003	%	< 0.003	Acceptable	
THCV	<LOQ	0.003	%	< 0.003	Acceptable	
d8THCV	<LOQ	0.003	%	< 0.003	Acceptable	
THCVA	<LOQ	0.003	%	< 0.003	Acceptable	
CBN	<LOQ	0.003	%	< 0.003	Acceptable	
exo-THC	<LOQ	0.003	%	< 0.003	Acceptable	
d9THC	<LOQ	0.003	%	< 0.003	Acceptable	
d8THC	<LOQ	0.003	%	< 0.003	Acceptable	
CBL	<LOQ	0.003	%	< 0.003	Acceptable	
CBC	<LOQ	0.003	%	< 0.003	Acceptable	
THCA	<LOQ	0.003	%	< 0.003	Acceptable	
CBCA	<LOQ	0.003	%	< 0.003	Acceptable	
CBLA	<LOQ	0.003	%	< 0.003	Acceptable	
CBT	<LOQ	0.003	%	< 0.003	Acceptable	

Abbreviations

ND - None Detected at or above MRL
RPD - Relative Percent Difference
LOQ - Limit of Quantitation

Units of Measure:

% - Percent



12423 NE Whitaker Way
 Portland, OR 97230
 503-254-1794



Report Number: 21-013872/D007.R000
Report Date: 12/08/2021
ORELAP#: OR100028
Purchase Order:
Received: 11/24/21 14:41

Revision: Document D:
 Legacy D: Effective:

Laboratory Quality Control Results

JAOAC2015 V986		Batch ID: 2110708						
Sample Duplicate		Sample D: 21-013872-0001						
Analyte	Result	Org. Result	LOQ	Units	RPD	Limits	Evaluation	Notes
CBDVA	<LOQ	<LOQ	0.003	%	NA	< 20	Acceptable	
CBDV	0.0580	0.0573	0.003	%	1.21	< 20	Acceptable	
CBE	0.0919	0.0892	0.003	%	2.97	< 20	Acceptable	
CBDA	<LOQ	<LOQ	0.003	%	NA	< 20	Acceptable	
CBGA	<LOQ	<LOQ	0.003	%	NA	< 20	Acceptable	
CBG	0.126	0.124	0.003	%	1.54	< 20	Acceptable	
CBD	13.7	13.8	0.003	%	0.731	< 20	Acceptable	
THCV	<LOQ	<LOQ	0.003	%	NA	< 20	Acceptable	
d8THCV	<LOQ	<LOQ	0.003	%	NA	< 20	Acceptable	
THCVA	<LOQ	<LOQ	0.003	%	NA	< 20	Acceptable	
CBN	<LOQ	<LOQ	0.003	%	NA	< 20	Acceptable	
exo-THC	<LOQ	<LOQ	0.003	%	NA	< 20	Acceptable	
d9THC	0.211	0.208	0.003	%	1.40	< 20	Acceptable	
d8THC	<LOQ	<LOQ	0.003	%	NA	< 20	Acceptable	
CBL	0.0124	0.0119	0.003	%	3.92	< 20	Acceptable	
CBC	0.192	0.190	0.003	%	1.32	< 20	Acceptable	
THCA	<LOQ	<LOQ	0.003	%	NA	< 20	Acceptable	
CBCA	<LOQ	<LOQ	0.003	%	NA	< 20	Acceptable	
CBLA	<LOQ	<LOQ	0.003	%	NA	< 20	Acceptable	
CBT	0.218	0.214	0.003	%	1.81	< 20	Acceptable	

Abbreviations

- ND - None Detected at or above MRL
- RPD - Relative Percent Difference
- LOQ - Limit of Quantitation
- NA - Calculation Not Applicable given non-numerical results

Units of Measure:

% - Percent



12423 NE Whitaker Way
Portland, OR 97230
503-254-1794



Report Number: 21-013872/D007.R000
Report Date: 12/08/2021
ORELAP#: OR100028
Purchase Order:
Received: 11/24/21 14:41

Explanation of QC Flag Comments:

Code	Explanation
Q	Matrix interferences affecting spike or surrogate recoveries.
Q1	Quality control result biased high. Only non-detect samples reported.
Q2	Quality control outside QC limits. Data considered estimate.
Q3	Sample concentration greater than four times the amount spiked.
Q4	Non-homogenous sample matrix, affecting RPD result and/or % recoveries.
Q5	Spike results above calibration curve.
Q6	Quality control outside QC limits. Data acceptable based on remaining QC.
R	Relative percent difference (RPD) outside control limit.
R1	RPD non-calculable, as sample or duplicate results are less than five times the LOQ.
R2	Sample replicates RPD non-calculable, as only one replicate is within the analytical range.
LOQ1	Quantitation level raised due to low sample volume and/or dilution.
LOQ2	Quantitation level raised due to matrix interference.
B	Analyte detected in method blank, but not in associated samples.
B1	The sample concentration is greater than 5 times the blank concentration.
B2	The sample concentration is less than 5 times the blank concentration.



12423 NE Whitaker Way
 Portland, OR 97230
 503-254-1794



Report Number: 21-013872/D004.R000
Report Date: 12/07/2021
ORELAP#: OR100028
Purchase Order:
Received: 11/24/21 14:41

Customer: Etz Hayim Holdings
Product identity: FORM-DK22-SG50
Client/Metric ID: .
Laboratory ID: 21-013872-0003

Summary

Residual Solvents:

All analytes passing and less than LOQ.

Pesticides:

All analytes passing and less than LOQ.

Terpenes:

Analyte	Percent by weight	Percent of Total	Analyte	Percent by weight	Percent of Total
(R)-(+)-Limonene [†]	11.5	60.53%	β-Myrcene [†]	4.72	24.84%
β-Caryophyllene [†]	2.37	12.47%	Humulene [†]	0.169	0.89%
α-Bisabolol [†]	0.0973	0.51%	d-3-Carene [†]	0.0546	0.29%
(-)-caryophyllene oxide [†]	0.0418	0.22%	Total Terpenes[†]	19.0	100.00%

Metals:

Less than LOQ for all analytes.

Microbiology:

Less than LOQ for all analytes.



12423 NE Whitaker Way
 Portland, OR 97230
 503-254-1794

Report Number: 21-013872/D004.R000
Report Date: 12/07/2021
ORELAP#: OR100028
Purchase Order:
Received: 11/24/21 14:41



Customer: Etz Hayim Holdings
 16427 NE Airport Way
 PORTLAND 97230
 United States of America (USA)

Product identity: FORM-DK22-SG50

Client/Metric ID: .

Sample Date:

Laboratory ID: 21-013872-0003

Sample Results

Analyte	Result	Limits	Units	LOQ	Batch	Analyze	Method	Status	Notes
E.coli	< LOQ		cfu/g	10	2110726	12/03/21	AOAC 991.14 (Petrifilm)	X, I	
Total Coliforms	< LOQ		cfu/g	10	2110726	12/03/21	AOAC 991.14 (Petrifilm)	X, I	
Mold (RAPID Petrifilm)	< LOQ		cfu/g	10	2110728	12/04/21	AOAC 2014.05 (RAPID)	X, I	
Yeast (RAPID Petrifilm)	< LOQ		cfu/g	10	2110728	12/04/21	AOAC 2014.05 (RAPID)	X, I	

Solvents		Residual Solvents by GC/MS				Units µg/g	Batch 2110835	Analyze 12/03/21 04:04 PM			
Analyte	Result	Limits	LOQ	Status	Notes	Analyte	Result	Limits	LOQ	Status	Notes
1,4-Dioxane	< LOQ	380	100	pass		2-Butanol	< LOQ	5000	200	pass	
2-Ethoxyethanol	< LOQ	160	30.0	pass		2-Methylbutane (Isopentane)	< LOQ		200		
2-Methylpentane	< LOQ		30.0			2-Propanol (IPA)	< LOQ	5000	200	pass	
2,2-Dimethylbutane	< LOQ		30.0			2,2-Dimethylpropane (neo-pentane)	< LOQ		200		
2,3-Dimethylbutane	< LOQ		30.0			3-Methylpentane	< LOQ		30.0		
Acetone	< LOQ	5000	200	pass		Acetonitrile	< LOQ	410	100	pass	
Benzene	< LOQ	2.00	1.00	pass		Butanes (sum)	< LOQ	5000	400	pass	
Cyclohexane	< LOQ	3880	200	pass		Ethanol ^l	< LOQ		200		
Ethyl acetate	< LOQ	5000	200	pass		Ethyl benzene	< LOQ		200		
Ethyl ether	< LOQ	5000	200	pass		Ethylene glycol	< LOQ	620	200	pass	
Ethylene oxide	< LOQ	50.0	20.0	pass		Hexanes (sum)	< LOQ	290	150	pass	
Isopropyl acetate	< LOQ	5000	200	pass		Isopropylbenzene (Cumene)	< LOQ	70.0	30.0	pass	
m,p-Xylene	< LOQ		200			Methanol	< LOQ	3000	200	pass	
Methylene chloride	< LOQ	600	60.0	pass		Methylpropane (Isobutane)	< LOQ		200		
n-Butane	< LOQ		200			n-Heptane	< LOQ	5000	200	pass	
n-Hexane	< LOQ		30.0			n-Pentane	< LOQ		200		
o-Xylene	< LOQ		200			Pentanes (sum)	< LOQ	5000	600	pass	
Propane	< LOQ	5000	200	pass		Tetrahydrofuran	< LOQ	720	100	pass	
Toluene	< LOQ	890	100	pass		Total Xylenes	< LOQ		400		
Total Xylenes and Ethyl benzene	< LOQ	2170	600	pass							



12423 NE Whitaker Way
 Portland, OR 97230
 503-254-1794



Report Number: 21-013872/D004.R000
Report Date: 12/07/2021
ORELAP#: OR100028
Purchase Order:
Received: 11/24/21 14:41

Pesticides					Method AOAC 2007.01 & EN 15662 (mod)	Units mg/kg	Batch 2110860	Analyze 12/06/21 09:54 AM			
Analyte	Result	Limits	LOQ	Status	Notes	Analyte	Result	Limits	LOQ	Status	Notes
Abamectin	< LOQ	0.50	0.250	pass		Acephate	< LOQ	0.40	0.250	pass	
Acequinocyl	< LOQ	2.0	1.00	pass		Acetamiprid	< LOQ	0.20	0.100	pass	
Aldicarb	< LOQ	0.40	0.200	pass		Azoxystrobin	< LOQ	0.20	0.100	pass	
Bifenazate	< LOQ	0.20	0.100	pass		Bifenthrin	< LOQ	0.20	0.100	pass	
Boscalid	< LOQ	0.40	0.200	pass		Carbaryl	< LOQ	0.20	0.100	pass	
Carbofuran	< LOQ	0.20	0.100	pass		Chlorantraniliprole	< LOQ	0.20	0.100	pass	
Chlorfenapyr	< LOQ	1.0	0.500	pass		Chlorpyrifos	< LOQ	0.20	0.100	pass	
Clofentezine	< LOQ	0.20	0.100	pass		Cyfluthrin	< LOQ	1.0	0.500	pass	
Cypermethrin	< LOQ	1.0	0.500	pass		Daminozide	< LOQ	1.0	0.500	pass	
Diazinon	< LOQ	0.20	0.100	pass		Dichlorvos	< LOQ	1.0	0.500	pass	
Dimethoate	< LOQ	0.20	0.100	pass		Ethoprophos	< LOQ	0.20	0.100	pass	
Etofenprox	< LOQ	0.40	0.200	pass		Etoxazole	< LOQ	0.20	0.100	pass	
Fenoxycarb	< LOQ	0.20	0.100	pass		Fenpyroximate	< LOQ	0.40	0.200	pass	
Fipronil	< LOQ	0.40	0.200	pass		Fonicamid	< LOQ	1.0	0.400	pass	
Fludioxonil	< LOQ	0.40	0.200	pass		Hexythiazox	< LOQ	1.0	0.400	pass	
Imazalil	< LOQ	0.20	0.100	pass		Imidacloprid	< LOQ	0.40	0.200	pass	
Kresoxim-methyl	< LOQ	0.40	0.200	pass		Malathion	< LOQ	0.20	0.100	pass	
Metalaxyl	< LOQ	0.20	0.100	pass		Methiocarb	< LOQ	0.20	0.100	pass	
Methomyl	< LOQ	0.40	0.200	pass		MGK-264	< LOQ	0.20	0.100	pass	
Myclobutanil	< LOQ	0.20	0.100	pass		Naled	< LOQ	0.50	0.250	pass	
Oxamyl	< LOQ	1.0	0.500	pass		Paclobutrazole	< LOQ	0.40	0.200	pass	
Parathion-Methyl	< LOQ	0.20	0.200	pass		Permethrin	< LOQ	0.20	0.100	pass	
Phosmet	< LOQ	0.20	0.100	pass		Piperonyl butoxide	< LOQ	2.0	1.00	pass	
Prallethrin	< LOQ	0.20	0.200	pass		Propiconazole	< LOQ	0.40	0.200	pass	
Propoxur	< LOQ	0.20	0.100	pass		Pyrethrin I (total)	< LOQ	1.0	0.500	pass	
Pyridaben	< LOQ	0.20	0.100	pass		Spinosad	< LOQ	0.20	0.100	pass	
Spiromesifen	< LOQ	0.20	0.100	pass		Spirotetramat	< LOQ	0.20	0.100	pass	
Spiroxamine	< LOQ	0.40	0.200	pass		Tebuconazole	< LOQ	0.40	0.200	pass	
Thiacloprid	< LOQ	0.20	0.100	pass		Thiamethoxam	< LOQ	0.20	0.100	pass	
Trifloxystrobin	< LOQ	0.20	0.100	pass							

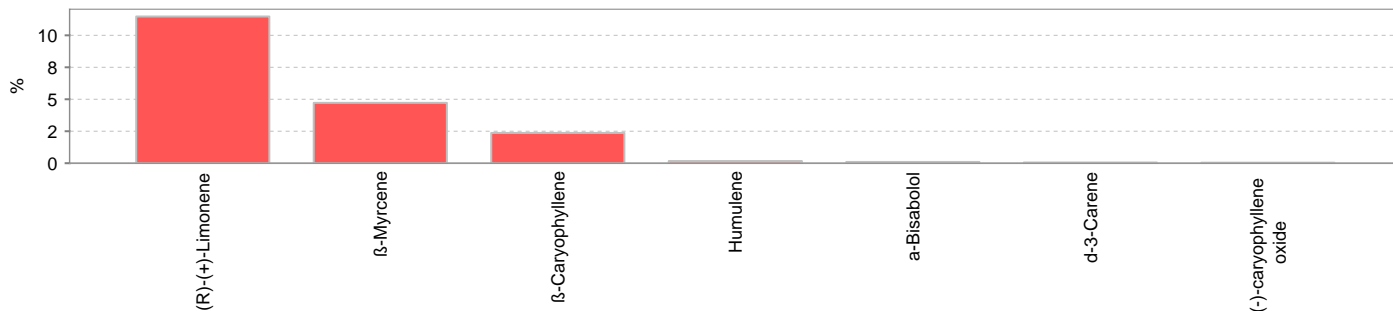


12423 NE Whitaker Way
Portland, OR 97230
503-254-1794

Report Number: 21-013872/D004.R000
Report Date: 12/07/2021
ORELAP#: OR100028
Purchase Order:
Received: 11/24/21 14:41



Terpenes				Method J AOAC 2015 V98-6	Units %	Batch 2110910	Analyze 12/07/21	03:14 AM	
Analyte	Result	LOQ	% of Total	Notes	Analyte	Result	LOQ	% of Total	Notes
(R)-(+)-Limonene [†]	11.5	0.199	60.53%		β-Myrcene [†]	4.72	0.019	24.84%	
β-Caryophyllene [†]	2.37	0.019	12.47%		Humulene [†]	0.169	0.019	0.889%	
α-Bisabolol [†]	0.0973	0.019	0.5121%		d-3-Carene [†]	0.0546	0.019	0.2874%	
(-)-caryophyllene oxide [†]	0.0418	0.019	0.2200%		(-)-Guaiol [†]	< LOQ	0.019	0.00%	
α-Terpinene [†]	< LOQ	0.019	0.00%		(+)-fenchol [†]	< LOQ	0.019	0.00%	
Sabinene [†]	< LOQ	0.019	0.00%		(+)-Pulegone [†]	< LOQ	0.019	0.00%	
(±)-trans-Nerolidol [†]	< LOQ	0.019	0.00%		γ-Terpinene [†]	< LOQ	0.019	0.00%	
p-Cymene [†]	< LOQ	0.019	0.00%		farnesene [†]	< LOQ	0.019	0.00%	
Linalool [†]	< LOQ	0.019	0.00%		Terpinolene [†]	< LOQ	0.019	0.00%	
(-)-α-Terpineol [†]	< LOQ	0.019	0.00%		Sabinene hydrate [†]	< LOQ	0.019	0.00%	
Geranyl acetate [†]	< LOQ	0.019	0.00%		(+)-Cedrol [†]	< LOQ	0.019	0.00%	
(-)-β-Pinene [†]	< LOQ	0.019	0.00%		α-pinene [†]	< LOQ	0.019	0.00%	
(+)-Borneol [†]	< LOQ	0.019	0.00%		(±)-Camphor [†]	< LOQ	0.019	0.00%	
(-)-Isopulegol [†]	< LOQ	0.019	0.00%		(±)-cis-Nerolidol [†]	< LOQ	0.019	0.00%	
(±)-fenchone [†]	< LOQ	0.019	0.00%		α-cedrene [†]	< LOQ	0.019	0.00%	
α-phellandrene [†]	< LOQ	0.019	0.00%		Camphene [†]	< LOQ	0.019	0.00%	
cis-β-Ocimene [†]	< LOQ	0.006	0.00%		Eucalyptol [†]	< LOQ	0.019	0.00%	
Geraniol [†]	< LOQ	0.019	0.00%		Isoborneol [†]	< LOQ	0.019	0.00%	
Menthol [†]	< LOQ	0.019	0.00%		nerol [†]	< LOQ	0.019	0.00%	
trans-β-Ocimene [†]	< LOQ	0.013	0.00%		valencene [†]	< LOQ	0.019	0.00%	
Total Terpenes	19.0								



Metals									
Analyte	Result	Limits	Units	LOQ	Batch	Analyze	Method	Status	Notes
Arsenic	< LOQ	0.200	mg/kg	0.0486	2110917	12/07/21	AOAC 2013.06 (mod.)	pass	X
Cadmium	< LOQ	0.200	mg/kg	0.0486	2110917	12/07/21	AOAC 2013.06 (mod.)	pass	X
Lead	< LOQ	0.500	mg/kg	0.0486	2110917	12/07/21	AOAC 2013.06 (mod.)	pass	X
Mercury	< LOQ	0.100	mg/kg	0.0243	2110917	12/07/21	AOAC 2013.06 (mod.)	pass	X



12423 NE Whitaker Way
Portland, OR 97230
503-254-1794



Report Number: 21-013872/D004.R000
Report Date: 12/07/2021
ORELAP#: OR100028
Purchase Order:
Received: 11/24/21 14:41

These test results are representative of the individual sample selected and submitted by the client.

Abbreviations

Limits: Action Levels per OAR-333-007-0400, OAR-333-007-0210, OAR-333-007-0220, CCR title 16-division 42. BCC-section 5723

Limit(s) of Quantitation (LOQ): The minimum levels, concentrations, or quantities of a target variable (e.g., target analyte) that can be reported with a specified degree of confidence.

† = Analyte not NELAP accredited.

Units of Measure

cfu/g = Colony forming units per gram

µg/g = Microgram per gram

mg/kg = Milligram per kilogram = parts per million (ppm)

% = Percentage of sample

% wt = µg/g divided by 10,000

Glossary of Qualifiers

I: Insufficient sample received to meet method requirements.

X: Not ORELAP accredited.

Approved Signatory

Derrick Tanner
General Manager



12423 NE Whitaker Way
Portland, OR 97230
503-254-1794



Report Number: 21-013872/D004.R000
Report Date: 12/07/2021
ORELAP#: OR100028
Purchase Order:
Received: 11/24/21 14:41



12423 NE Whitaker Way Portland OR 97230 p.503-254-1794

Cannabis Chain of Custody Record

ORELAP ID: OR100028

Field ID		Date/Time Collected	Pesticides - OR 59 compounds	Pesticide Multi-Residue - 379 compounds	Potency	Residual Solvents	Water Activity	Moisture	Terpenes	Micro: Yeast and Mold	Micro: E.Coli and Total Coliform	Heavy Metals	Mycotoxins	Other	Matrix	Weight	Serving size for edibles	Comments/Metric ID
FORM-DK21-SG25	11/18	1020			X													Laz Nat Discount
FORM-DK21-SG25	11/18	1020							X	X								
FORM-DK21-SG25	11/18	1020	X			X			X			X						potency first
FORM-DK22-SG50	11/18	1600			X													
FORM-DK22-SG50	11/18	1600							X	X								
FORM-DK22-SG50	11/18	1600	X			X		X				X						

Collected By:	Relinquished By:	Date	Time	Received by:	Date	Time	Lab Use Only:
<input checked="" type="checkbox"/> Standard (5 day)							Client Alias:
<input type="checkbox"/> Rush (3-4 day) (1.5x Standard)							Order Number:
<input checked="" type="checkbox"/> Priority Rush (2 day) (2x Standard)							Proper Container
							Sample Condition: 20.6°C
							Temperature: Client
							Shipped Via:
							Evidence of cooling: <input type="checkbox"/> Yes <input checked="" type="checkbox"/> No

SUBMISSION OF SAMPLES WITH TESTING REQUIREMENTS TO PIXIS WILL BE UNDERSTOOD TO BE AN AGREEMENT FOR SERVICES IN ACCORDANCE WITH THE CONDITIONS LISTED ON THE BACK OF THIS FORM

Revision: 1.02 Control#: CF023
Effective 01/31/2019 Revised 01/31/2019

www.pixislabs.com

Page 1 of 2



12423 NE Whitaker Way
 Portland, OR 97230
 503-254-1794



Report Number: 21-013872/D004.R000
Report Date: 12/07/2021
ORELAP#: OR100028
Purchase Order:
Received: 11/24/21 14:41

Revision Document ID
 Legacy ID Effective

Laboratory Quality Control Results

Batch ID: 2 0835

Residual Solvents		Method Blank		Laboratory Control Sample					
Analyte	Result	LOQ	Notes	Result	Spike	Units	% Rec	Limits	Notes
Propane	ND	200		95	9.8	µg/g	00.9	0	0
Isobutane	ND	200		90	260	µg/g	9	0	0
Butane	ND	200		200	260	µg/g	95.2	0	0
2,2-Dimethylpropane	ND	200		0	600	µg/g	06.9	0	0
Methanol	ND	200		6.0	6.0	µg/g	0.9	0	0
Ethylene Oxide	ND	30		03	95	µg/g	0.6	0	0
2-Methylbutane	ND	200		620	6.0	µg/g	00.6	0	0
Pentane	ND	200		5.0	6.0	µg/g	9.5	0	0
Ethanol	ND	200		600	6.0	µg/g	99	0	0
Ethyl Ether	ND	200		60	6.0	µg/g	90	0	0
2,2-Dimethylbutane	ND	30		30	6	µg/g	8.8	0	0
Acetone	ND	200		5.0	6.0	µg/g	93.8	0	0
2-Propanol	ND	200		630	6.0	µg/g	0.2	0	0
Acetonitrile	ND	00		60	8	µg/g	95.0	0	0
2,3-Dimethylbutane	ND	30		0	6	µg/g	0.8	0	0
Dichloromethane	ND	60		50	9	µg/g	9.6	0	0
2-Methylpentane	ND	30		5	65	µg/g	95.2	0	0
3-Methylpentane	ND	30		6	2	µg/g	93.6	0	0
Hexane	ND	30		55	6	µg/g	92.8	0	0
Ethyl acetate	ND	200		530	6.0	µg/g	95.0	0	0
2-Butanol	ND	200		580	6.0	µg/g	98	0	0
Tetrahydrofuran	ND	00		59	83	µg/g	95.0	0	0
Cyclohexane	ND	200		90	6.0	µg/g	92.5	0	0
Benzene	ND			5	5.36	µg/g	96.5	0	0
Isopropyl Acetate	ND	200		680	620	µg/g	03	0	0
Heptane	ND	200		5.0	6.0	µg/g	9.5	0	0
Dioxane	ND	00			89	µg/g	9	0	0
2-Ethoxyethanol	ND	30		2	6	µg/g	03.0	0	0
Ethylene Glycol	ND	200		523	50	µg/g	03.8	0	0
o-xylene	ND	200		50	8	µg/g	93.0	0	0
Ethyl benzene	ND	200		933	60	µg/g	96	0	0
m,p-Xylene	ND	200		000	9	µg/g	02	0	0
o-Xylene	ND	200		996	982	µg/g	0	0	0
Cumene	ND	30		62	69	µg/g	95.9	0	0
1,2-Dichloroethane	ND			0.932		µg/g	93.2	0	0
Chloroform	ND			0.855		µg/g	85.5	0	0
1,1-dichloroethylene	ND			0.8.3		µg/g	8.3	0	0
Ethylene Oxide	ND			0.8.3		µg/g	8.3	0	0
Dichloromethane	ND			0.8.8		µg/g	8.8	0	0
Benzene	ND			0.8.2		µg/g	8.2	0	0



12423 NE Whitaker Way
Portland, OR 97230
503-254-1794



Report Number: 21-013872/D004.R000
Report Date: 12/07/2021
ORELAP#: OR100028
Purchase Order:
Received: 11/24/21 14:41

Revision Document ID
Legacy ID Effective

QC Sample Duplicate Sample ID: 21 013938 0001

Analyte	Result	Org. Result	LOQ	Units	RPD	Limits	Accept/Fail	Notes
Propane	ND	ND	200	µg/g	0.0	20	Acceptable	
Isobutane	ND	ND	200	µg/g	0.0	20	Acceptable	
Butane	ND	ND	200	µg/g	0.0	20	Acceptable	
2,2 Dimethylpropane	ND	ND	200	µg/g	0.0	20	Acceptable	
Methanol	ND	ND	200	µg/g	0.0	20	Acceptable	
Ethylene Oxide	ND	ND	30	µg/g	0.0	20	Acceptable	
2 Methylbutane	ND	ND	200	µg/g	0.0	20	Acceptable	
Pentane	ND	ND	200	µg/g	0.0	20	Acceptable	
Ethanol	06	06	200	µg/g	36	20	FAIL	06
Ethyl Ether	ND	ND	200	µg/g	0.0	20	Acceptable	
2,2 Dimethylbutane	ND	ND	30	µg/g	0.0	20	Acceptable	
Acetone	ND	ND	200	µg/g	0.0	20	Acceptable	
2 Propanol	ND	ND	200	µg/g	0.0	20	Acceptable	
Acetonitrile	ND	ND	00	µg/g	0.0	20	Acceptable	
2,3 Dimethylbutane	ND	ND	30	µg/g	0.0	20	Acceptable	
Dichloromethane	ND	ND	60	µg/g	0.0	20	Acceptable	
2 Methylpentane	ND	ND	30	µg/g	0.0	20	Acceptable	
3 Methylpentane	ND	ND	30	µg/g	0.0	20	Acceptable	
Hexane	ND	ND	30	µg/g	0.0	20	Acceptable	
Ethyl acetate	ND	ND	200	µg/g	0.0	20	Acceptable	
2 Butanol	ND	ND	200	µg/g	0.0	20	Acceptable	
Tetrahydrofuran	ND	ND	100	µg/g	0.0	20	Acceptable	
Cyclohexane	ND	ND	200	µg/g	0.0	20	Acceptable	
Benzene	ND	ND	30	µg/g	0.0	20	Acceptable	
Isopropyl Acetate	ND	ND	200	µg/g	0.0	20	Acceptable	
Heptane	ND	ND	200	µg/g	0.0	20	Acceptable	
Dioxane	ND	ND	00	µg/g	0.0	20	Acceptable	
2 Ethoxyethanol	ND	ND	30	µg/g	0.0	20	Acceptable	
Ethylene Glycol	ND	ND	200	µg/g	0.0	20	Acceptable	
o xylene	ND	ND	200	µg/g	0.0	20	Acceptable	
Ethyl benzene	ND	ND	200	µg/g	0.0	20	Acceptable	
m p Xylene	ND	ND	200	µg/g	0.0	20	Acceptable	
o Xylene	ND	ND	200	µg/g	0.0	20	Acceptable	
Cumene	ND	ND	30	µg/g	0.0	20	Acceptable	
2 Dichloroethane	ND	ND		µg/g	0.0	20	Acceptable	
Chloroform	ND	ND		µg/g	0.0	20	Acceptable	
trichloroethylene	ND	ND		µg/g	0.0	20	Acceptable	
Ethylene Oxide	ND	ND		µg/g	0.0	20	Acceptable	
Dichloromethane	ND	ND		µg/g	0.0	20	Acceptable	
Benzene	ND	ND		µg/g	0.0	2	Acceptable	

Abbreviations

- ND None Detected at or above MRL
- RPD Relative Percent Difference
- LOQ Limit of Quantitation
- 06 Quality control outside QC limits Data acceptable based on remaining QC

Units of Measure:

µg/g Microgram per gram or ppm



12423 NE Whitaker Way
 Portland, OR 97230
 503-254-1794

Report Number: 21-013872/D004.R000
Report Date: 12/07/2021
ORELAP#: OR100028
Purchase Order:
Received: 11/24/21 14:41



Revision: 2 Document ID: 3120
 Legacy ID: CFL-C21Effective:

Laboratory Pesticide Quality Control Results

AOAC 2007.1 & EN 15662		Units: mg/Kg		Batch ID: 2110860				
Method Blank		Laboratory Control Sample						
Analyte	Blank Result	Blank Limits	Notes	LCS Result	LCS Spike	LCS % Rec	Limits	Notes
Accephate	0.000	< 0.250		0.893	1.000	89.3	73.3 - 136	
Accequinocyl	0.000	< 1.000		4.137	4.000	103.4	73.1 - 136	
Acetamiprid	0.000	< 0.100		0.373	0.400	93.3	73.5 - 136	
Aldicarb	0.000	< 0.200		0.807	0.800	100.9	74.9 - 139	
Abamectin	0.000	< 0.250		0.907	1.000	90.7	76.6 - 142	
Azoxystrobin	0.000	< 0.100		0.330	0.400	82.6	72.7 - 135	
Bifenazate	0.000	< 0.100		0.375	0.400	93.8	82.3 - 153	
Bifenthrin	0.000	< 0.100		0.347	0.400	86.7	72.8 - 135	
Boscalid	0.000	< 0.200		0.783	0.800	97.9	73.8 - 137	
Carbaryl	0.006	< 0.100		0.366	0.400	91.4	73.7 - 137	
Carbofuran	0.002	< 0.100		0.398	0.400	99.5	74.3 - 138	
Chlorantraniliprol	0.000	< 0.100		0.386	0.400	96.5	68.2 - 127	
Chlorfenapyr	0.000	< 0.500		2.299	2.000	114.9	73.4 - 136	
Chlorpyrifos	0.000	< 0.100		0.364	0.400	91.1	71.5 - 133	
Clofentezine	0.000	< 0.100		0.386	0.400	96.4	71.8 - 133	
Cyfluthrin	0.000	< 0.500		2.200	2.000	110.0	74.9 - 139	
Cypermethrin	0.000	< 0.500		2.206	2.000	110.3	73.7 - 137	
Daminozide	0.084	< 0.500		1.675	2.000	83.7	73.0 - 135	
Diazinon	0.000	< 0.100		0.382	0.400	95.4	73.9 - 137	
Dichlorvos	0.000	< 0.500		2.023	2.000	101.2	71.8 - 133	
Dimethoat	0.000	< 0.100		0.414	0.400	103.5	73.1 - 136	
Ethoprophos	0.000	< 0.100		0.375	0.400	93.8	72.1 - 134	
Etofenprox	0.000	< 0.200		0.682	0.800	85.2	74.8 - 139	
Etoxazol	0.000	< 0.100		0.326	0.400	81.5	73.8 - 137	
Fenoxycarb	0.000	< 0.100		0.375	0.400	93.6	72.8 - 135	
Fenpyroximat	0.000	< 0.200		0.834	0.800	104.2	73.8 - 137	
Fipronil	0.000	< 0.200		0.748	0.800	93.5	74.7 - 139	
Fonicamid	0.000	< 0.250		0.961	1.000	96.1	73.6 - 137	
Fludioxonil	0.000	< 0.200		0.777	0.800	97.1	75.3 - 140	
Hexythiazox	0.000	< 0.250		0.834	1.000	83.4	71.6 - 133	
Imazali	0.000	< 0.100		0.366	0.400	91.5	74.8 - 139	
Imidacloprid	0.000	< 0.200		0.850	0.800	106.2	73.2 - 136	
Kresoxim-Methyl	0.000	< 0.200		0.775	0.800	96.9	73.1 - 136	
Malathion	0.000	< 0.100		0.405	0.400	101.3	73.0 - 136	
Metaxyl	0.000	< 0.100		0.366	0.400	91.4	73.8 - 137	
Methiocarb	0.003	< 0.100		0.375	0.400	93.7	73.0 - 136	
Methomyl	0.000	< 0.200		0.755	0.800	94.3	72.5 - 135	
MKG 264	0.000	< 0.100		0.363	0.400	90.8	73.1 - 136	
Myclobutanil	0.000	< 0.100		0.374	0.400	93.4	73.5 - 137	
Naled	0.000	< 0.250		0.914	1.000	91.4	73.4 - 136	
Oxamyl	0.000	< 0.500		1.969	2.000	98.4	73.3 - 136	
Paclobutrazol	0.000	< 0.200		0.703	0.800	87.9	73.8 - 137	
Parathion Methyl	0.000	< 0.200		0.698	0.800	87.3	75.9 - 141	
Permethrin	0.000	< 0.100		0.364	0.400	91.0	73.2 - 136	
Phosmet	0.000	< 0.100		0.339	0.400	84.9	73.0 - 136	
Piperonyl butoxide	0.000	< 0.500		1.822	2.000	91.1	76.2 - 142	
Prallethrin	0.000	< 0.100		0.380	0.400	95.0	73.2 - 136	
Propiconazole	0.000	< 0.200		0.779	0.800	97.4	73.3 - 136	
Propoxur	0.014	< 0.100		0.345	0.400	86.3	72.7 - 135	
Pyrethrins	0.000	< 0.100		0.387	0.413	93.8	67.9 - 126	
Pyridaben	0.000	< 0.100		0.354	0.400	88.5	72.7 - 135	
Spinosad	0.000	< 0.100		0.349	0.388	89.9	75.5 - 140	
Spiromesifen	0.000	< 0.100		0.364	0.400	90.9	74.7 - 139	
Spirotetramat	0.000	< 0.100		0.371	0.400	92.6	73.6 - 137	
Spiroxamine	0.000	< 0.200		0.738	0.800	92.3	71.2 - 132	
Tebuconazol	0.000	< 0.200		0.787	0.800	98.4	73.4 - 136	
Thiadoprid	0.000	< 0.100		0.414	0.400	103.4	72.9 - 135	
Thiamethoxam	0.000	< 0.100		0.380	0.400	95.0	72.4 - 134	
Trifloxystrobin	0.000	< 0.100		0.385	0.400	96.2	73.0 - 136	



12423 NE Whitaker Way
Portland, OR 97230
503-254-1794

Report Number: 21-013872/D004.R000
Report Date: 12/07/2021
ORELAP#: OR100028
Purchase Order:
Received: 11/24/21 14:41



Revision: 2 Document ID: 3120
Legacy ID: CFL-C21Effective:

Laboratory Pesticide Quality Control Results

AOAC 2007.1 & EN 15662		Units: mg/Kg					Batch ID: 2110860			
Matrix Spike/Matrix Spike Duplicate Recoveries		Sample ID: 21-013872-0003								
Analyte	Result	MS Res	MSD Res	Spike	RPD%	Limit	MS % Rec	MSD % Rec	Limits	Notes
Acceptate	0.000	0.890	0.908	1.000	2.0%	< 30	89.0%	90.8%	50 - 150	
Acceptinocyl	0.000	3.249	3.315	4.000	2.0%	< 30	81.2%	82.9%	50 - 150	
Acetamidiprid	0.000	0.374	0.373	0.400	0.1%	< 30	93.5%	93.3%	50 - 150	
Aldicarb	0.000	0.847	0.861	0.800	1.7%	< 30	105.9%	107.7%	50 - 150	
Abamectin	0.000	1.241	1.234	1.000	0.5%	< 30	124.1%	123.4%	50 - 150	
Azoxystrobin	0.000	0.343	0.380	0.400	10.1%	< 30	85.8%	94.9%	50 - 150	
Bifenazate	0.000	0.378	0.404	0.400	6.8%	< 30	94.5%	101.1%	50 - 150	
Bifenthrin	0.000	0.351	0.357	0.400	1.9%	< 30	87.7%	89.4%	50 - 150	
Boscalid	0.000	0.860	0.784	0.800	9.1%	< 30	107.4%	98.0%	50 - 150	
Carbaryl	0.000	0.370	0.341	0.400	8.2%	< 30	92.6%	85.2%	50 - 150	
Carbofuran	0.000	0.377	0.388	0.400	2.8%	< 30	94.3%	97.0%	50 - 150	
Chlorantraniliprol	0.000	0.394	0.392	0.400	0.5%	< 30	98.5%	98.0%	50 - 150	
Chlorfenapyr	0.000	2.226	1.758	2.000	23.5%	< 30	111.3%	87.9%	50 - 150	
Chlorpyrifos	0.000	0.338	0.368	0.400	8.6%	< 30	84.4%	92.0%	50 - 150	
Clofentezine	0.000	0.404	0.381	0.400	6.0%	< 30	101.1%	95.2%	50 - 150	
Cyfluthrin	0.000	1.482	1.418	2.000	4.5%	< 30	74.1%	70.9%	30 - 150	
Cypermethrin	0.000	1.328	1.296	2.000	2.4%	< 30	66.4%	64.8%	50 - 150	
Daminozide	0.073	1.898	1.848	2.000	2.8%	< 30	91.3%	88.8%	30 - 150	
Diazinon	0.000	0.405	0.380	0.400	6.2%	< 30	101.2%	95.1%	50 - 150	
Dichlorvos	0.000	1.957	1.967	2.000	0.5%	< 30	97.9%	98.3%	50 - 150	
Dimethoat	0.000	0.410	0.413	0.400	0.9%	< 30	102.4%	103.3%	50 - 150	
Ethoprophos	0.005	0.376	0.378	0.400	0.4%	< 30	92.8%	93.2%	50 - 150	
Etofenprox	0.000	0.598	0.614	0.800	2.5%	< 30	74.8%	76.7%	50 - 150	
Etoxazol	0.000	0.393	0.350	0.400	11.6%	< 30	98.2%	87.5%	50 - 150	
Fenoxycarb	0.000	0.372	0.366	0.400	1.6%	< 30	93.1%	91.6%	50 - 150	
Fenpyroximat	0.000	0.673	0.636	0.800	5.5%	< 30	84.1%	79.5%	50 - 150	
Fipronil	0.000	0.716	0.733	0.800	2.3%	< 30	89.5%	91.6%	50 - 150	
Fonicamid	0.000	0.950	0.929	1.000	2.2%	< 30	95.0%	92.9%	50 - 150	
Fludioxonil	0.000	0.869	0.986	0.800	12.6%	< 30	108.6%	123.3%	50 - 150	
Hexythiazox	0.000	0.943	0.995	1.000	5.3%	< 30	94.3%	99.5%	50 - 150	
Imazalil	0.000	0.399	0.402	0.400	0.7%	< 30	99.8%	100.5%	50 - 150	
Imidacloprid	0.000	0.807	0.810	0.800	0.3%	< 30	100.9%	101.3%	50 - 150	
Kresoxim-Methyl	0.000	0.776	0.762	0.800	1.8%	< 30	97.0%	95.3%	50 - 150	
Malathion	0.000	0.323	0.340	0.400	5.1%	< 30	80.8%	85.0%	50 - 150	
Metaxyl	0.021	0.401	0.391	0.400	2.6%	< 30	95.0%	92.5%	50 - 150	
Methiocarb	0.000	0.360	0.363	0.400	0.7%	< 30	90.1%	90.7%	50 - 150	
Methomyl	0.000	0.785	0.766	0.800	2.4%	< 30	98.1%	95.8%	50 - 150	
MGK 264	0.000	0.381	0.387	0.400	1.5%	< 30	95.3%	96.8%	50 - 150	
Myclobutanil	0.000	0.358	0.379	0.400	5.7%	< 30	89.6%	94.8%	50 - 150	
Naled	0.000	0.987	1.037	1.000	4.9%	< 30	98.7%	103.7%	50 - 150	
Oxamyl	0.000	2.061	1.963	2.000	4.9%	< 30	103.1%	98.1%	50 - 150	
Paclobutrazol	0.000	0.750	0.777	0.800	3.4%	< 30	93.8%	97.1%	50 - 150	
Parathion Methyl	0.000	0.518	0.672	0.800	25.8%	< 30	64.8%	84.0%	30 - 150	
Permethrin	0.000	0.368	0.349	0.400	5.2%	< 30	92.0%	87.3%	50 - 150	
Phosmet	0.000	0.367	0.350	0.400	5.0%	< 30	91.9%	87.4%	50 - 150	
Piperonyl butoxide	0.000	2.185	1.904	2.000	13.8%	< 30	109.3%	95.2%	50 - 150	
Prallethrin	0.116	0.463	0.473	0.400	2.7%	< 30	86.9%	89.3%	50 - 150	
Propiconazole	0.000	0.807	0.793	0.800	1.7%	< 30	100.8%	99.1%	50 - 150	
Propoxur	0.000	0.356	0.371	0.400	4.1%	< 30	89.0%	92.7%	50 - 150	
Pyrethrins	0.000	0.425	0.417	0.413	1.9%	< 30	102.8%	100.9%	50 - 150	
Pyridaben	0.000	0.408	0.386	0.400	5.6%	< 30	102.0%	96.5%	50 - 150	
Spinosad	0.000	0.437	0.417	0.388	4.7%	< 30	112.6%	107.4%	50 - 150	
Spiromesifen	0.000	0.418	0.414	0.400	1.0%	< 30	104.6%	103.6%	50 - 150	
Spirotetramat	0.000	0.403	0.396	0.400	1.8%	< 30	100.8%	99.0%	50 - 150	
Spiroxamine	0.000	0.789	0.743	0.800	5.9%	< 30	98.6%	92.9%	50 - 150	
Tebuconazol	0.000	0.774	0.748	0.800	3.5%	< 30	96.7%	93.4%	50 - 150	
Thiadoprid	0.000	0.431	0.393	0.400	9.2%	< 30	107.8%	98.3%	50 - 150	
Thiamethoxam	0.000	0.370	0.385	0.400	4.0%	< 30	92.5%	96.3%	50 - 150	
Trifloxystrobin	0.000	0.415	0.406	0.400	2.2%	< 30	103.6%	101.4%	50 - 150	



12423 NE Whitaker Way
 Portland, OR 97230
 503-254-1794

Report Number: 21-013872/D004.R000
Report Date: 12/07/2021
ORELAP#: OR100028
Purchase Order:
Received: 11/24/21 14:41



Revision Document D
 Legacy D Effective

Terpenes Quality Control Results

Method Reference: EPA 5035				Batch ID: 2 09 0					
Method Blank				Laboratory Control Sample					
Analyte	Result	LOQ	Notes	Result	LCS	Units	LCS % Rec	Limits	Notes
a-pinene	< OQ	< 200		488	500	µg/g	98%	70 - 30	
Camphene	< OQ	< 200		468	500	µg/g	94%	70 - 30	
Sabinene	< OQ	< 200		50	500	µg/g	100%	70 - 30	
b-Pinene	< OQ	< 200		557	500	µg/g	111%	70 - 30	
b-Myrcene	< OQ	< 200		46	500	µg/g	92%	70 - 30	
a-phellandrene	< OQ	< 200		426	500	µg/g	85%	70 - 30	
d-3-Carene	< OQ	< 200		488	500	µg/g	98%	70 - 30	
a-Terpinene	< OQ	< 200		5 9	500	µg/g	104%	70 - 30	
p-Cymene	< OQ	< 200		465	500	µg/g	93%	70 - 30	
D- imonene	< OQ	< 200		502	500	µg/g	100%	70 - 30	
ucalyptol	< OQ	< 200		488	500	µg/g	98%	70 - 30	
b-cis-Ocimene	< OQ	< 67		88	67	µg/g	113%	70 - 30	
b- rans-Ocimene	< OQ	< 33		320	333	µg/g	96%	70 - 30	
g-Terpinene	< OQ	< 200		533	500	µg/g	107%	70 - 30	
Sabinene ydra e	< OQ	< 200		542	500	µg/g	108%	70 - 30	
Terpinolene	< OQ	< 200		50	500	µg/g	100%	70 - 30	
D- enchone	< OQ	< 200		520	500	µg/g	104%	70 - 30	
inalool	< OQ	< 200		53	500	µg/g	106%	70 - 30	
enchol	< OQ	< 200		544	500	µg/g	109%	70 - 30	
Camphor	< OQ	< 200		468	500	µg/g	94%	70 - 30	
sopulego	< OQ	< 200		452	500	µg/g	90%	70 - 30	
soborneol	< OQ	< 200		493	500	µg/g	99%	70 - 30	
Borneol	< OQ	< 200		575	500	µg/g	115%	70 - 30	
D -Men hol	< OQ	< 200		509	500	µg/g	102%	70 - 30	
Terpineol	< OQ	< 200		543	500	µg/g	109%	70 - 30	
Nerol	< OQ	< 200		486	500	µg/g	97%	70 - 30	
Pulegone	< OQ	< 200		568	500	µg/g	114%	70 - 30	
Geraniol	< OQ	< 200		596	500	µg/g	119%	70 - 30	
Geranyl Ace a e	< OQ	< 200		508	500	µg/g	102%	70 - 30	
a-Cedrene	< OQ	< 200		592	500	µg/g	118%	70 - 30	
b-Caryophyllene	< OQ	< 200		538	500	µg/g	108%	70 - 30	
a- umulene	< OQ	< 200		592	500	µg/g	118%	70 - 30	
Valenene	< OQ	< 200		454	500	µg/g	91%	70 - 30	
cis-Nerolidol	< OQ	< 200		5 0	500	µg/g	102%	70 - 30	
a- arnesene	< OQ	< 200		550	500	µg/g	110%	70 - 30	
rans-Nerolidol	< OQ	< 200		603	500	µg/g	121%	70 - 30	
Caryophyllene Oxide	< OQ	< 200		506	500	µg/g	101%	70 - 30	
Guaiol	< OQ	< 200		629	500	µg/g	126%	70 - 30	
Cedrol	< OQ	< 200		523	500	µg/g	105%	70 - 30	
a-Bisabolol	< OQ	< 200		533	500	µg/g	107%	70 - 30	

Definitions

LOQ	Limit of Quantitation
LCS	Laboratory Control Sample
% REC	Percent Recovery



12423 NE Whitaker Way
 Portland, OR 97230
 503-254-1794



Report Number: 21-013872/D004.R000
Report Date: 12/07/2021
ORELAP#: OR100028
Purchase Order:
Received: 11/24/21 14:41

Revision Document D
 Legacy D Effective

Terpenes Quality Control Results

Method Reference: EPA 5035		Batch ID: 2 09 0					
Sample/Sample Duplicate		Sample ID: 21-013872-0003					
Analyte	Result	Org. Result	LOQ	Units	% RPD	LIMIT	Notes
a-pinene	< OQ	< OQ	99	µg/g	0%	< 20	
Camphene	< OQ	< OQ	99	µg/g	0%	< 20	
Sabinene	< OQ	< OQ	99	µg/g	0%	< 20	
b-Pinene	< OQ	< OQ	99	µg/g	0%	< 20	
b-Myrcene	46200	47200	99	µg/g	2%	< 20	
a-phellandrene	< OQ	< OQ	99	µg/g	0%	< 20	
d-3-Carene	529	546	99	µg/g	3%	< 20	
a-Terpinene	< OQ	< OQ	99	µg/g	0%	< 20	
p-Cymene	< OQ	< OQ	99	µg/g	0%	< 20	
D- imonene	20000	23000	99	µg/g	2%	< 20	
α-caryophyllene	< OQ	< OQ	99	µg/g	0%	< 20	
b-cis-Ocimene	< OQ	< OQ	66.2	µg/g	0%	< 20	
b-trans-Ocimene	< OQ	< OQ	32	µg/g	0%	< 20	
γ-Terpinene	< OQ	< OQ	99	µg/g	0%	< 20	
Sabinene hydrate	< OQ	< OQ	99	µg/g	0%	< 20	
Terpinolene	< OQ	< OQ	99	µg/g	0%	< 20	
D-enchone	< OQ	< OQ	99	µg/g	0%	< 20	
linalool	< OQ	< OQ	99	µg/g	0%	< 20	
linalool acetate	< OQ	< OQ	99	µg/g	0%	< 20	
Camphor	< OQ	< OQ	99	µg/g	0%	< 20	
sopulegone	< OQ	< OQ	99	µg/g	0%	< 20	
soborneol	< OQ	< OQ	99	µg/g	0%	< 20	
Borneol	< OQ	< OQ	99	µg/g	0%	< 20	
D-menthyl acetate	< OQ	< OQ	99	µg/g	0%	< 20	
Terpineol	< OQ	< OQ	99	µg/g	0%	< 20	
Nerol	< OQ	< OQ	99	µg/g	0%	< 20	
Pulegone	< OQ	< OQ	99	µg/g	0%	< 20	
Geraniol	< OQ	< OQ	99	µg/g	0%	< 20	
Geranyl acetate	< OQ	< OQ	99	µg/g	0%	< 20	
α-Cedrene	< OQ	< OQ	99	µg/g	0%	< 20	
b-Caryophyllene	23000	23700	99	µg/g	3%	< 20	
α-terpinolene	650	690	99	µg/g	2%	< 20	
Valenene	< OQ	< OQ	99	µg/g	0%	< 20	
cis-Nerolidol	< OQ	< OQ	99	µg/g	0%	< 20	
α-bisabolene	< OQ	< OQ	99	µg/g	0%	< 20	
trans-Nerolidol	< OQ	< OQ	99	µg/g	0%	< 20	
Caryophyllene Oxide	407	418	99	µg/g	3%	< 20	
Guaiol	< OQ	< OQ	99	µg/g	0%	< 20	
Cedrol	< OQ	< OQ	99	µg/g	0%	< 20	
α-Bisabolol	943	973	99	µg/g	3%	< 20	

Definitions

RPD Relative Percent Difference



12423 NE Whitaker Way
 Portland, OR 97230
 503-254-1794

Report Number: 21-013872/D004.R000
Report Date: 12/07/2021
ORELAP#: OR100028
Purchase Order:
Received: 11/24/21 14:41



Explanation of QC Flag Comments:

Code	Explanation
Q	Matrix interferences affecting spike or surrogate recoveries.
Q1	Quality control result biased high. Only non-detect samples reported.
Q2	Quality control outside QC limits. Data considered estimate.
Q3	Sample concentration greater than four times the amount spiked.
Q4	Non-homogenous sample matrix, affecting RPD result and/or % recoveries.
Q5	Spike results above calibration curve.
Q6	Quality control outside QC limits. Data acceptable based on remaining QC.
R	Relative percent difference (RPD) outside control limit.
R1	RPD non-calculable, as sample or duplicate results are less than five times the LOQ.
R2	Sample replicates RPD non-calculable, as only one replicate is within the analytical range.
LOQ1	Quantitation level raised due to low sample volume and/or dilution.
LOQ2	Quantitation level raised due to matrix interference.
B	Analyte detected in method blank, but not in associated samples.
B1	The sample concentration is greater than 5 times the blank concentration.
B2	The sample concentration is less than 5 times the blank concentration.