

CONSOLIDATED TEST RESULTS SUMMARY

Please see the following pages for full test results.

BULK SKU	BATCH #	NR: Not Reported NA: Not Available LOQ: Limit Of Quantitation LOD: Limit Of Detection 1 g = 10 ⁻³ kg = 10 ³ mg = 10 ⁶ µg 1 mg/kg = 1 ppm = 1000 ppb
PRODUCT NAME	SERVING SIZE	
LABORATORY: COLUMBIA LABORATORIES	OREGON ACCREDITATION: OR100028	

POTENCY	PER PUMP (30ML PUMP)	PER PUMP (100ML PUMP)	PER GRAM	REGULATORY ACTION LEVEL
Cannabidiol (CBD)	mg/pump	mg/pump	mg/g	N/A
Total THC (d9-THC, THCA)	mg/pump	mg/pump	mg/g	3 mg/g
Cannabigerol (CBG)	mg/pump	mg/pump	mg/g	N/A
Cannabinol (CBN)	mg/pump	mg/pump	mg/g	N/A
Cannabichromene (CBC)	mg/pump	mg/pump	mg/g	N/A
Tetrahydrocannabinolic Acid (THCA)	mg/pump	mg/pump	mg/g	N/A
Delta-9-THC (d9-THC)	mg/pump	mg/pump	mg/g	N/A
Delta-8-THC (d8-THC)	mg/pump	mg/pump	mg/g	N/A

HEAVY METALS	PER PUMP (30ML PUMP)	PER PUMP (100ML PUMP)	PER GRAM	REGULATORY ACTION LEVEL
Arsenic	µg/pump	µg/pump	µg/g	10 µg/day ^[1]
Cadmium	µg/pump	µg/pump	µg/g	4.1 µg/day ^[1]
Lead	µg/pump	µg/pump	µg/g	3.5 µg/day ^[2]
Mercury	µg/pump	µg/pump	µg/g	2 µg/day ^[1]

PESTICIDES	REGULATORY ACTION LEVEL
None of the 59 pesticides tested found above limit of detection in the sample.	10 ppb ^[1]

RESIDUAL SOLVENTS
None of the 36 residual solvents tested found above limit of quantitation in the sample.

MICROBIAL	PASS/FAIL
Yeast & Mold	Pass
Coliform	Pass
Water Activity	Pass

TERPENES	% OF SAMPLE
Farnesene	%
β-Caryophyllene	%
α-Bisabolol	%

TERPENES	% OF SAMPLE
Guaiol	%
Humulene	%
Caryophyllene Oxide	%

1. AMERICAN HERBAL PHARMACOPOEIA. (2014). CANNABIS INFLORESCENCE: STANDARDS OF IDENTITY, ANALYSIS, AND QUALITY CONTROL. WASHINGTON DC: AHP.

2. US FOOD AND DRUG ADMINISTRATION. (2019). LEAD IN FOOD, FOODWARES, AND DIETARY SUPPLEMENTS. WASHINGTON DC: FDA. US FOOD AND DRUG ADMINISTRATION. (2019). LEAD IN FOOD, FOODWARES, AND DIETARY SUPPLEMENTS. WASHINGTON DC: FDA.



12423 NE Whitaker Way
Portland, OR 97230
503-254-1794



Report Number: 21-004538/D04.R00
Report Date: 04/30/2021
ORELAP#: OR100028
Purchase Order:
Received: 04/23/21 17:00

Customer: Etz Hayim Holdings
Product identity: FORM-DD19-MSL.GEL20
Client/Metric ID: .
Laboratory ID: 21-004538-0001

Sample Date: 04/23/21 14:45

Summary

Potency:

Analyte per 1g	Result	Limits	Units	Status	
CBC per 1g [†]	0.770		mg/1g		CBD-Total per 1g 22.2 mg/1g
CBD per 1g	22.2		mg/1g		
CBDV per 1g [†]	0.120		mg/1g		THC-Total per 1g 0.608 mg/1g
CBG per 1g [†]	0.218		mg/1g		
CBL per 1g [†]	0.0736		mg/1g		(Reported in milligrams per serving)
Δ9-THC per 1g	0.608		mg/1g		



12423 NE Whitaker Way
 Portland, OR 97230
 503-254-1794

Report Number: 21-004538/D04.R00
Report Date: 04/30/2021
ORELAP#: OR100028
Purchase Order:
Received: 04/23/21 17:00



Customer: Etz Hayim Holdings
 16427 NE Airport Way
 PORTLAND 97230
 United States of America (USA)

Product identity: FORM-DD19-MSL.GEL20

Client/Metric ID: .

Sample Date: 04/23/21 14:45

Laboratory ID: 21-004538-0001

Evidence of Cooling: No

Temp: 17.9 °C

Serving Size #1: 1 g

Sample Results

Potency per 1g					
Method J AOAC 2015 V98-6 (mod)Units mg/se Batch: 2103807 Analyze: 4/28/21 12:29:00 AM					
Analyte	Result	Limits	Units	LOQ	Notes
CBC per 1g [†]	0.770		mg/1g	0.0317	
CBC-A per 1g [†]	< LOQ		mg/1g	0.0317	
CBC-Total per 1g [†]	0.770		mg/1g	0.0595	
CBD per 1g	22.2		mg/1g	0.317	
CBD-A per 1g	< LOQ		mg/1g	0.0317	
CBD-Total per 1g	22.2		mg/1g	0.345	
CBDV per 1g [†]	0.120		mg/1g	0.0317	
CBDV-A per 1g [†]	< LOQ		mg/1g	0.0317	
CBDV-Total per 1g [†]	0.120		mg/1g	0.0592	
CBG per 1g [†]	0.218		mg/1g	0.0317	
CBG-A per 1g [†]	< LOQ		mg/1g	0.0317	
CBG-Total per 1g [†]	0.218		mg/1g	0.0592	
CBL per 1g [†]	0.0736		mg/1g	0.0317	
CBN per 1g	< LOQ		mg/1g	0.0317	
Δ8-THC per 1g [†]	< LOQ		mg/1g	0.0317	
Δ9-THC per 1g	0.608		mg/1g	0.0317	
THC-A per 1g	< LOQ		mg/1g	0.0317	
THC-Total per 1g	0.608		mg/1g	0.0595	
THCV per 1g [†]	< LOQ		mg/1g	0.0317	
THCV-A per 1g [†]	< LOQ		mg/1g	0.0317	
THCV-Total per 1g [†]	< LOQ		mg/1g	0.0595	



12423 NE Whitaker Way
 Portland, OR 97230
 503-254-1794



Report Number: 21-004538/D02.R00
Report Date: 04/30/2021
ORELAP#: OR100028
Purchase Order:
Received: 04/23/21 17:00

Customer: Etz Hayim Holdings
Product identity: FORM-DD19-MSL.GEL20
Client/Metric ID: .
Laboratory ID: 21-004538-0003

Sample Date: 04/23/21 14:45

Summary

Residual Solvents:

Analyte	Result (µg/g)	Limits (µg/g)	Status
Ethanol†	5000		
2-Propanol (IPA)	663	5000	pass

Pesticides:

All analytes passing and less than LOQ.

Terpenes:

Analyte	Percent by weight	Percent of Total	Analyte	Percent by weight	Percent of Total
Menthol†	3.28	74.72%	Eucalyptol†	0.515	11.73%
(R)-(+)-Limonene†	0.217	4.94%	a-pinene†	0.0688	1.57%
Sabinene†	0.0623	1.42%	Linalool†	0.0549	1.25%
β-Myrcene†	0.0475	1.08%	p-Cymene†	0.0359	0.82%
(-)-β-Pinene†	0.0330	0.75%	gamma-Terpinene†	0.0319	0.73%
a-Terpinene†	0.0220	0.50%	a-phellandrene†	0.0194	0.00%
Total Terpenes†	4.39	100.00%			

Metals:

Less than LOQ for all analytes.



12423 NE Whitaker Way
 Portland, OR 97230
 503-254-1794

Report Number: 21-004538/D02.R00
Report Date: 04/30/2021
ORELAP#: OR100028
Purchase Order:
Received: 04/23/21 17:00



Customer: Etz Hayim Holdings
 16427 NE Airport Way
 PORTLAND 97230
 United States of America (USA)

Product identity: FORM-DD19-MSL.GEL20

Client/Metric ID: .

Sample Date: 04/23/21 14:45

Laboratory ID: 21-004538-0003

Evidence of Cooling: No

Temp: 17.9 °C

Sample Results

Solvents											Method Residual Solvents by GC/MS					Units µg/g		Batch 2103742		Analyze 04/27/21 11:14 AM				
Analyte	Result	Limits	LOQ	Status	Notes	Analyte	Result	Limits	LOQ	Status	Notes													
1,4-Dioxane	< LOQ	380	100	pass		2-Butanol	< LOQ	5000	200	pass														
2-Ethoxyethanol	< LOQ	160	30.0	pass		2-Methylbutane	< LOQ		200															
2-Methylpentane	< LOQ		30.0			2-Propanol (IPA)	663	5000	200	pass														
2,2-Dimethylbutane	< LOQ		30.0			2,2-Dimethylpropane	< LOQ		200															
2,3-Dimethylbutane	< LOQ		30.0			3-Methylpentane	< LOQ		30.0															
Acetone	< LOQ	5000	200	pass		Acetonitrile	< LOQ	410	100	pass														
Benzene	< LOQ	2.00	1.00	pass		Butanes (sum)	< LOQ	5000	400	pass														
Cyclohexane	< LOQ	3880	200	pass		Ethanol ⁱ	5000		200		E													
Ethyl acetate	< LOQ	5000	200	pass		Ethyl benzene	< LOQ		200															
Ethyl ether	< LOQ	5000	200	pass		Ethylene glycol	< LOQ	620	200	pass														
Ethylene oxide	< LOQ	50.0	20.0	pass		Hexanes (sum)	< LOQ	290	150	pass														
Isopropyl acetate	< LOQ	5000	200	pass		Isopropylbenzene	< LOQ	70.0	30.0	pass														
m,p-Xylene	< LOQ		200			Methanol	< LOQ	3000	200	pass														
Methylene chloride	< LOQ	600	60.0	pass		Methylpropane	< LOQ		200															
n-Butane	< LOQ		200			n-Heptane	< LOQ	5000	200	pass														
n-Hexane	< LOQ		30.0			n-Pentane	< LOQ		200															
o-Xylene	< LOQ		200			Pentanes (sum)	< LOQ	5000	600	pass														
Propane	< LOQ	5000	200	pass		Tetrahydrofuran	< LOQ	720	100	pass														
Toluene	< LOQ	890	100	pass		Total Xylenes	< LOQ		400															
Total Xylenes and Ethyl	< LOQ	2170	600	pass																				



12423 NE Whitaker Way
 Portland, OR 97230
 503-254-1794



Report Number: 21-004538/D02.R00
Report Date: 04/30/2021
ORELAP#: OR100028
Purchase Order:
Received: 04/23/21 17:00

Pesticides											
Method AOAC 2007.01 & EN 15662 (mod) Units mg/kg Batch 2103873 Analyze 04/29/21 03:50 PM											
Analyte	Result	Limits	LOQ	Status	Notes	Analyte	Result	Limits	LOQ	Status	Notes
Abamectin	< LOQ	0.50	0.250	pass		Acephate	< LOQ	0.40	0.250	pass	
Acequinocyl	< LOQ	2.0	1.00	pass		Acetamiprid	< LOQ	0.20	0.100	pass	
Aldicarb	< LOQ	0.40	0.200	pass		Azoxystrobin	< LOQ	0.20	0.100	pass	
Bifenazate	< LOQ	0.20	0.100	pass		Bifenthrin	< LOQ	0.20	0.100	pass	
Boscalid	< LOQ	0.40	0.200	pass		Carbaryl	< LOQ	0.20	0.100	pass	
Carbofuran	< LOQ	0.20	0.100	pass		Chlorantraniliprole	< LOQ	0.20	0.100	pass	
Chlorfenapyr	< LOQ	1.0	0.500	pass		Chlorpyrifos	< LOQ	0.20	0.100	pass	
Clofentezine	< LOQ	0.20	0.100	pass		Cyfluthrin	< LOQ	1.0	0.500	pass	
Cypermethrin	< LOQ	1.0	0.500	pass		Daminozide	< LOQ	1.0	0.500	pass	
Diazinon	< LOQ	0.20	0.100	pass		Dichlorvos	< LOQ	1.0	0.500	pass	
Dimethoate	< LOQ	0.20	0.100	pass		Ethoprophos	< LOQ	0.20	0.100	pass	
Etofenprox	< LOQ	0.40	0.200	pass		Etoxazole	< LOQ	0.20	0.100	pass	
Fenoxycarb	< LOQ	0.20	0.100	pass		Fenpyroximate	< LOQ	0.40	0.200	pass	
Fipronil	< LOQ	0.40	0.200	pass		Fonicamid	< LOQ	1.0	0.400	pass	
Fludioxonil	< LOQ	0.40	0.200	pass		Hexythiazox	< LOQ	1.0	0.400	pass	
Imazalil	< LOQ	0.20	0.100	pass		Imidacloprid	< LOQ	0.40	0.200	pass	
Kresoxim-methyl	< LOQ	0.40	0.200	pass		Malathion	< LOQ	0.20	0.100	pass	
Metalaxyl	< LOQ	0.20	0.100	pass		Methiocarb	< LOQ	0.20	0.100	pass	
Methomyl	< LOQ	0.40	0.200	pass		MGK-264	< LOQ	0.20	0.100	pass	
Myclobutanil	< LOQ	0.20	0.100	pass		Naled	< LOQ	0.50	0.250	pass	
Oxamyl	< LOQ	1.0	0.500	pass		Paclobutrazole	< LOQ	0.40	0.200	pass	
Parathion-Methyl	< LOQ	0.20	0.200	pass		Permethrin	< LOQ	0.20	0.100	pass	
Phosmet	< LOQ	0.20	0.100	pass		Piperonyl butoxide	< LOQ	2.0	1.00	pass	
Prallethrin	< LOQ	0.20	0.200	pass		Propiconazole	< LOQ	0.40	0.200	pass	
Propoxur	< LOQ	0.20	0.100	pass		Pyrethrin I (total)	< LOQ	1.0	0.500	pass	
Pyridaben	< LOQ	0.20	0.100	pass		Spinosad	< LOQ	0.20	0.100	pass	
Spiromesifen	< LOQ	0.20	0.100	pass		Spirotetramat	< LOQ	0.20	0.100	pass	
Spiroxamine	< LOQ	0.40	0.200	pass		Tebuconazole	< LOQ	0.40	0.200	pass	
Thiacloprid	< LOQ	0.20	0.100	pass		Thiamethoxam	< LOQ	0.20	0.100	pass	
Trifloxystrobin	< LOQ	0.20	0.100	pass							

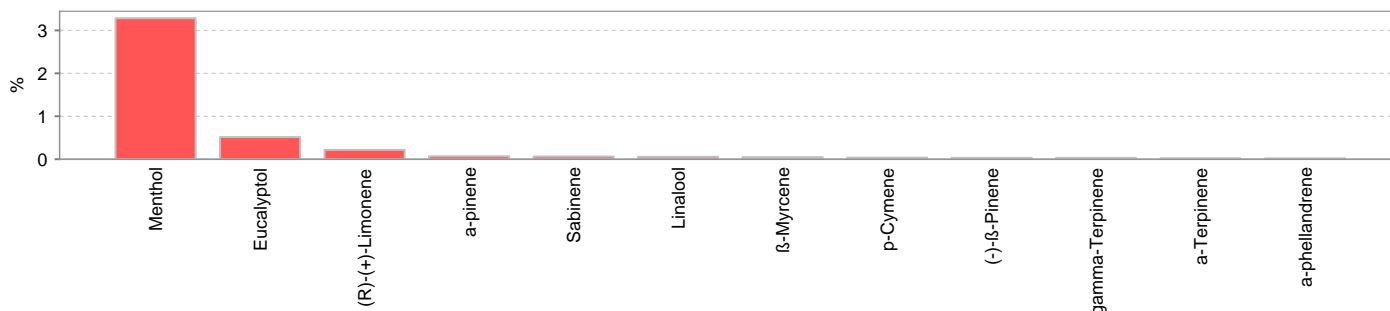


12423 NE Whitaker Way
Portland, OR 97230
503-254-1794

Report Number: 21-004538/D02.R00
Report Date: 04/30/2021
ORELAP#: OR100028
Purchase Order:
Received: 04/23/21 17:00



Terpenes				Method J AOAC 2015 V98-6	Units %	Batch 2103845	Analyze 04/29/21 07:14 AM		
Analyte	Result	LOQ	% of Total	Notes	Analyte	Result	LOQ	% of Total	Notes
Menthol [†]	3.28	0.019	74.72%		Eucalyptol [†]	0.515	0.019	11.73%	
(R)-(+)-Limonene [†]	0.217	0.019	4.94%		a-pinene [†]	0.0688	0.019	1.57%	
Sabinene [†]	0.0623	0.019	1.42%		Linalool [†]	0.0549	0.019	1.25%	
β-Myrcene [†]	0.0475	0.019	1.08%		p-Cymene [†]	0.0359	0.019	0.82%	
(-)-β-Pinene [†]	0.0330	0.019	0.75%		gamma-Terpinene [†]	0.0319	0.019	0.73%	
a-Terpinene [†]	0.0220	0.019	0.50%		a-phellandrene [†]	0.0194	0.019	0.00%	
Geraniol [†]	< LOQ	0.019	0.00%		farnesene [†]	< LOQ	0.019	0.00%	
a-Bisabolol [†]	< LOQ	0.019	0.00%		Camphene [†]	< LOQ	0.019	0.00%	
nerol [†]	< LOQ	0.019	0.00%		Terpinolene [†]	< LOQ	0.019	0.00%	
(+)-Pulegone [†]	< LOQ	0.019	0.00%		Sabinene hydrate [†]	< LOQ	0.019	0.00%	
Geranyl acetate [†]	< LOQ	0.019	0.00%		(-)-a-Terpineol [†]	< LOQ	0.019	0.00%	
(±)-Camphor [†]	< LOQ	0.019	0.00%		(+)-fenchol [†]	< LOQ	0.019	0.00%	
(-)-caryophyllene oxide [†]	< LOQ	0.019	0.00%		a-cedrene [†]	< LOQ	0.019	0.00%	
(±)-fenchone [†]	< LOQ	0.019	0.00%		(-)-Guaiol [†]	< LOQ	0.019	0.00%	
(-)-Isopulegol [†]	< LOQ	0.019	0.00%		(+)-Borneol [†]	< LOQ	0.019	0.00%	
(+)-Cedrol [†]	< LOQ	0.019	0.00%		(±)-cis-Nerolidol [†]	< LOQ	0.019	0.00%	
(±)-trans-Nerolidol [†]	< LOQ	0.019	0.00%		cis-β-Ocimene [†]	< LOQ	0.006	0.00%	
d-3-Carene [†]	< LOQ	0.019	0.00%		Humulene [†]	< LOQ	0.019	0.00%	
Isoborneol [†]	< LOQ	0.019	0.00%		β-Caryophyllene [†]	< LOQ	0.019	0.00%	
trans-β-Ocimene [†]	< LOQ	0.013	0.00%		valencene [†]	< LOQ	0.019	0.00%	
Total Terpenes	4.39								



Metals									
Analyte	Result	Limits	Units	LOQ	Batch	Analyze	Method	Notes	
Arsenic	< LOQ		mg/kg	0.0366	2103775	04/27/21	AOAC 2013.06 (mod.)	X	
Cadmium	< LOQ		mg/kg	0.0366	2103775	04/27/21	AOAC 2013.06 (mod.)	X	
Lead	< LOQ		mg/kg	0.0366	2103775	04/27/21	AOAC 2013.06 (mod.)	X	
Mercury	< LOQ		mg/kg	0.0183	2103775	04/27/21	AOAC 2013.06 (mod.)	X	