



DEA No. RA0571996  
FL License # CMTL-0003  
CLIA No. 10D1094068

# Certificate of Analysis

Compliance Test

CREATING BETTER DAYS  
10061 AMBERWOOD RD  
FORT MYERS, FL 33913

Batch # 1022005821  
Batch Date: 2022-10-10  
Extracted From: Delta 8

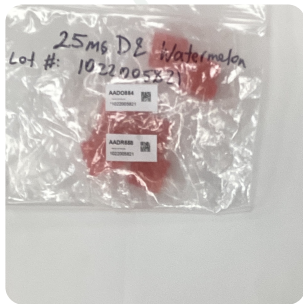
Test Reg State: Florida

Order # CRE221104-010003-RT  
Order Date: 2022-11-04  
Sample # AADR558

Sampling Date: 2022-11-04  
Lab Batch Date: 2022-11-04  
Completion Date: 2022-11-09

Initial Gross Weight: 58.126 g  
Net Weight: 53.526 g

Number of Units: 1  
Net Weight per Unit: 4460.500 mg



Product Image

Potency Tested

**Potency - 11**  
Specimen Weight: 1520.000 mg

**Tested**  
SOP13.001 (LCUV)

**Potency Summary**

Total Active THC None Detected	Total Active CBD None Detected
Total CBG None Detected	Total CBN None Detected
Other Cannabinoids 0.634%	Total Cannabinoids 28.280mg

Pieces For Panel: 12

Analyte	Dilution (1:n)	LOD (%)	LOQ (%)	Result (mg/g)	(%)
Delta-8 THC	100.000	2.60E-5	0.001	6.340	0.634
CBC	10.000	1.80E-5	0.001	<LOQ	<LOQ
CBD	10.000	5.40E-5	0.001	<LOQ	<LOQ
CBDA	10.000	1.00E-5	0.001	<LOQ	<LOQ
CBDV	10.000	6.50E-5	0.001	<LOQ	<LOQ
CBG	10.000	2.48E-4	0.001	<LOQ	<LOQ
CBGA	10.000	8.00E-5	0.001	<LOQ	<LOQ
CBN	10.000	1.40E-5	0.001	<LOQ	<LOQ
Delta-9 THC	10.000	1.30E-5	0.001	<LOQ	<LOQ
THCA-A	10.000	3.20E-5	0.001	<LOQ	<LOQ
THCV	10.000	7.00E-6	0.001	<LOQ	<LOQ

Xueli Gao Lab Toxicologist  
Ph.D., DABT

Aixia Sun Lab Director/Principal Scientist  
D.H.Sc., M.Sc., B.Sc., MT (AAB)



Definitions and Abbreviations used in this report: Total Active CBD = CBD + (CBD-A \* 0.877), \*Total CBDV = CBDV + (CBDVA \* 0.87), Total Active THC = THCA-A \* 0.877 + Delta 9 THC, Total THC = THC + (THCVA \* 0.87), CBG Total = (CBGA \* 0.877) + CBG, CBN Total = (CBNA \* 0.877) + CBN, Total CBC = CBC + (CBCA \* 0.877), Total THC-O-Acetate = Delta 8 THC-O-Acetate + Delta 9 THC-O-Acetate, Other Cannabinoids Total = Total Cannabinoids - All the listed cannabinoids on the summary section, Total Detected Cannabinoids = Delta8a10a-THC + Delta8-THC + Total CBN + CBT + Delta8-THCV + Total CBG + Total CBD + Total THC + Total CBC + Total CBDV + Delta10-THC + Total THC-O-Acetate, Analyte Details above show the Dry Weight Concentrations unless specified as 12% moisture concentration. (mg/ml) = Milligrams per Milliliter, LOQ = Limit of Quantitation, LOD = Limit of Detection, Dilution = Dilution Factor (ppb) = Parts per Billion, (%) = Percent, (cfu/g) = Colony Forming Unit per Gram (cfu/g) = Colony Forming Unit per Gram, LOD = Limit of Detection, (µg/g) = Microgram per Gram (ppm) = Parts per Million, (ppm) = (µg/g), (aw) = aw (area ratio) = Area Ratio, (mg/Kg) = Milligram per Kilogram, \*Measurement of Uncertainty = +/- 10%

This report shall not be reproduced, without written approval, from ACS Laboratory. The results of this report relate only to the material or product analyzed. Test results are confidential unless explicitly waived otherwise. Accredited by a third-party accrediting body as a competent testing laboratory pursuant to ISO/IEC 17025 of the International Organization for Standardization.